



005

## ASHRAF

Fabrication & Engineering Industries (Pvt) Ltd.

Head Office: CCA-204, FF-Block, Phase-IV, DHA,  
Lahore, Pakistan  
Tel: +92 42 3574 5901-2, Fax: +92 42 3574 5906

Factory: Ring Road, Near China Scheme Shahbaz  
Road, Lahore, Pakistan  
Tel: +92 42 3728 9248, +92 42 3626 2112,  
+92 42 3627 5152, Fax: +92 42 3728 0597

Email: [info@ashrafindustries.com](mailto:info@ashrafindustries.com)

[www.ashrafindustries.com](http://www.ashrafindustries.com)



## Cable Management System



005





#### OUR MISSION

We are an ISO 9001-2008 certified company and Our mission is to enhance customer value by offering world class solutions in cable management systems, thereby striving for service excellence at the highest level to clients on a global front.

#### INFRASTRUCTURE

Our facility is housed in an Industrial shed built up in excess of 16000 sq.ft with open space of about 56000 sq.ft. Strategically located in the well industrialized area situated on Bund road easily accessible through Lahore Ring Road.

With a known tradition for technological innovation the facility houses state of art machinery for high-end production. The precision tooling has been specifically designed and manufactured in accordance with international standards. At the heart of our manufacturing facility stands a CNC (computer numerically controlled) press bend. This is complemented with a full range of sheet metal working machinery including spot, arc, TIG & MIG welding.

Our in house engineering design section is equipped with high-end hardware and efficient software packages to support. Measuring instruments is of the highest quality and is periodically calibrated to ensure dimensional accuracy of products at all times.

The facility is manned by competent & experienced personnel at all levels, who have a "Quality Attitude" that transforms into "Quality Product" having its destination to our valued customers.

**Our product** range has been engineered and designed in compliance to all relevant standards like International Electromechanical Commission (IEC), British Standard Institute (BSI), NEMA, ASTM, ISO and National Fire Protection Association (NEPA).

Our core team of engineers is dedicated itself to supply their clients with easy to use, secure and economic fixing systems. This principle has been developed in the company through the work experience and the quality standards.

for ASHRAF FABRICATION & ENGINEERING INDUSTRIES (PVT) LTD.



## Standard Finish

### 1. Pre Galvanized (Mill Galvanized to BS 29989)

Pre-galvanized steel is produced by coating coils of sheet with zinc by continuously rolling the material through molten zinc at the mills. This is also known as mill galvanized or pre galvanized. These coils are slit to size and then fabricated by roll forming, Shearing, punching, pre-galvanized cable tray products.

This finish is usually used in normal atmosphere pollutants. In contradiction of what many people think, it can also be used in the presence of moisture as the cable ladder or tray is protected from corrosion by two ways. During fabrication, cut edges and welded areas are not normally zinc coated; however, the zinc near the uncoated metal becomes a sacrificial anode to protect the bare areas after a short period of time.

A. The existing layer of zinc which isolates steel from the effect of the external environment.

B. The existing zinc will also protect the bare exposed steel points, preventing corrosion to occur.

**The protective lives of the exposed points depend upon three major factors:**

A. The thickness of zinc coating, where greater thickness results in better preservation.

B. The most exposed point will have a short life span compared to other points.

C. Major environment factors like harsh climatic condition, exposure to chemicals, industrial plants and finally the coastal regions where the effect of salt and moisture will drastically reduce the protective life.

### 2. Hot Dip Galvanized after Fabrication to BS 729 or ASTM A 123 (Hot Dip Galvanized or Batch Hot Dip Galvanized)

In this process, cable trays are fabricated from steel and then completely immersed in a bath of molten zinc where a metallic bond occurs resulting in a zinc coating that completely coats all surfaces, including welding and edges.

The zinc thickness is controlled by the amount of time each part is immersed in the molten zinc bath as well as the speed at which it is removed.

Hot dip galvanized finish can be used in tougher environment from pre-galvanized finishes due to the absence of cut edge or weld points. The layer of zinc which bonds to steel provides a dual protection against corrosion. It protects first as an overall barrier coating. If this coating happens to be scratched or gouged, zinc secondary defense is called upon to protect the steel by galvanic action.

Hot dip galvanized after outdoor exposure and will protect steel for many years in most outdoor environment and in many aggressive industrial environments.

### 3. Epoxy Coating

Epoxy resin offers hard adherent coating which is non-flammable; it has extremely high resistance to corrosion, acids, and alkalis and is not affected by salt or moisture.

### 4. Polyvinyl Chloride Coating (PVC)

PVC coating provides electrical insulation to cable trays. It offers good resistance to sea water and sea oil but has poor resistance to organic solvents and is also inflammable.



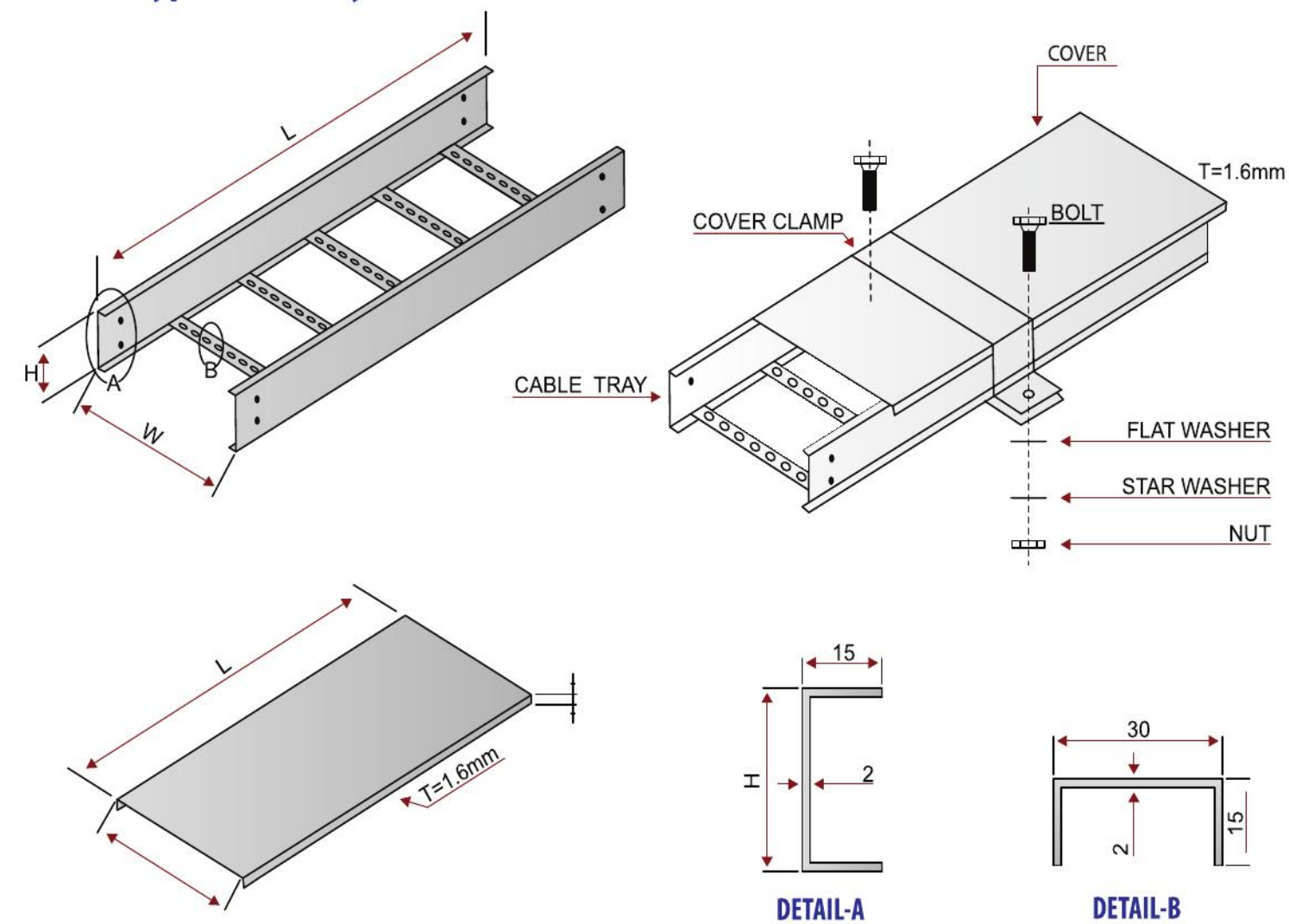


# Contents

Ladder Type Cable Tray	1
Ladder Type Horizontal Bend 90°	2
Ladder Type Horizontal Bend 45°	3
Ladder Type Tee	4
Ladder Type Cross	5
Ladder Type Inside Riser	6
Ladder Type Outside Riser	7
Hanger Post Assembly Arrangement	8
Perforated Type Cable Tray	9
Perforated Type Horizontal Bend 90°	10
Perforated Type Horizontal Bend 45°	11
Perforated Type Tee	12
Perforated Type Cross	13
Perforated Type Inside Riser	14
Perforated Type Outside Riser	15
Joint Plate Assembly For Ladder Type & Perforated Type Cable Tray.	16
Assembly For Vertical Adjustable Joint Plate	17
Assembly For Horizontal Adjustable Joint Plate	18
Reducer Plate Assembly	19
Hold Down Clamp with J-Bolt/Side Rail Clamp	20
Surface C-Channel Plain, Perforated	21
Double & Single Direction C-Channel Bracket	22
Cable Management System Running on Ceiling (Surface Mounted)	23
Cable Management System Wall Support by C-Channel & Bracket - Bracket Assembly C-Channel	24
Cable Management System Wall Support by C-Channel & Bracket - Bracket Assembly with C-Channel Nut & Bolt	25
Cable Management System Wall Support by C-Channel & Bracket - Bracket Assembly with C-Channel Nut & Bolt	26
Lightning Protection & Earthing Products	27



## Ladder Type Cable Tray With Cover



**Note:** Maximum Available Width 1000mm & Length 6mtr

S.NO.	CODE No.	W (mm)	H (mm)	L (m)
1	AL-CL-10.5	100	75	2.44
2	AL-CL-10.10	100	100	2.44
3	AL-CL-10.15	100	150	2.44
4	AL-CL-20-7.5	200	75	2.44
5	AL-CL-20-10	200	100	2.44
6	AL-CL-20-15	200	150	2.44
7	AL-CL-30-7.5	300	75	2.44
8	AL-CL-30-10	300	100	2.44
9	AL-CL-30-15	300	150	2.44
10	AL-CL-40-7.5	400	75	2.44
11	AL-CL-40-10	400	100	2.44

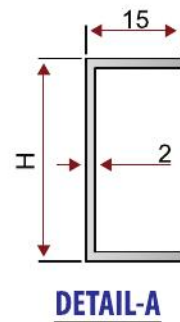
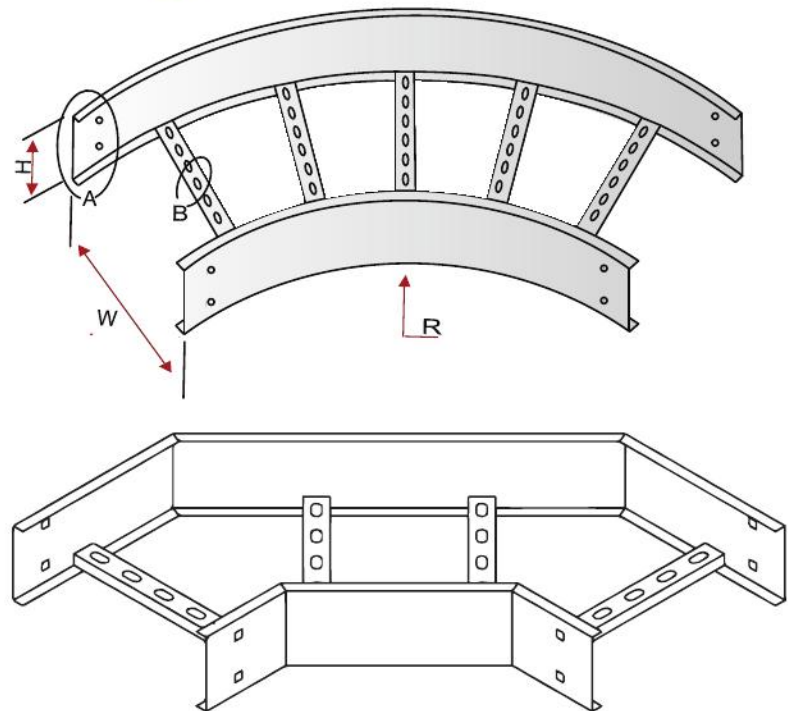
**FINISH:** Hot Dip Galvanised (ASTM A-123)  
Powder Coated and Painted

S.NO.	CODE No.	W (mm)	H (mm)	L (m)
12	AL-CL-40-15	400	150	2.44
13	AL-CL-45-70	450	75	2.44
14	AL-CL-45-10	450	100	2.44
15	AL-CL-46-15	450	150	2.44
16	AL-CL-50-7.5	500	75	2.44
17	AL-CL-50-10	500	100	2.44
18	AL-CL-50-15	500	150	2.44
19	AL-CL-60-7.5	600	75	2.44
20	AL-CL-60-10	600	100	2.44
21	AL-CL-60-15	600	150	2.44

**MATERIAL:** Hot Rolled/Cold Rolled  
Mild Steel/Stainless Steel  
**SIZE:** Available in 2.44/3 Meter Length



## Ladder Type Horizontal Bend 90° With Cover



S.NO.	CODE NO.	W (mm)	H (mm)	R (mm)
1	AI-B90-10-7.5-60	100	75	600
2	AI-B90-10-10-60	100	100	600
3	AI-B90-10-15-60	100	150	600
4	AI-B90-20-7.5-60	200	75	600
5	AI-B90-20-10-60	200	100	600
6	AI-B90-20-15-60	200	150	600
7	AI-B90-30-7.5-60	300	75	600
8	AI-B90-30-10-60	300	100	600
9	AI-B90-30-15-60	300	150	600
10	AI-B90-40-7.5-60	400	75	600
11	AI-B90-40-10-60	400	100	600
12	AI-B90-40-15-60	400	150	600
13	AI-B90-45-7.5-60	450	75	600
14	AI-B90-45-10-60	450	100	600
15	AI-B90-45-15-60	450	150	600

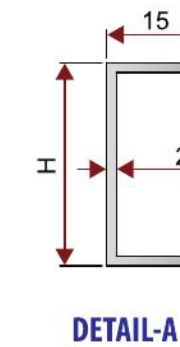
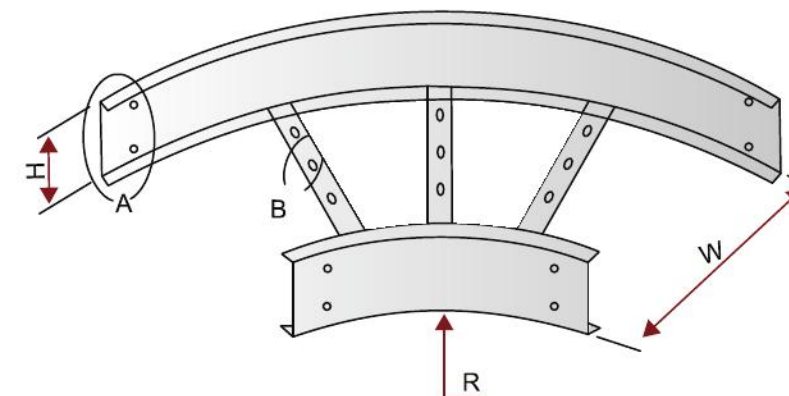
**FINISH:** Hot Dip Galvanised (ASTM A-123 )  
Powder Coated and Painted

S.NO.	CODE NO.	W (mm)	H (mm)	R (mm)
16	AI-B90-50-7.5-60	500	75	600
17	AI-B90-50-10-60	500	100	600
18	AI-B90-50-15-60	500	150	600
19	AI-B90-60-7.5-60	600	75	600
20	AI-B90-60-10-60	600	100	600
21	AI-B90-60-15-60	600	150	600

**MATERIAL:** Hot Rolled/Cold Rolled  
Mild Steel/Stainless Steel

**Note:** Maximum Available Width 1000mm.

## Ladder Type Horizontal Bend 45° With Cover



S.NO.	CODE NO.	W (mm)	H (mm)	R (mm)
1	AI-B45-10-7.5-60	100	75	600
2	AI-B45-10-10-60	100	100	600
3	AI-B45-10-15-60	100	150	600
4	AI-B45-20-7.5-60	200	75	600
5	AI-B45-20-10-60	200	100	600
6	AI-B45-20-15-60	200	150	600
7	AI-B45-30-7.5-60	300	75	600
8	AI-B45-30-10-60	300	100	600
9	AI-B45-30-15-60	300	150	600
10	AI-B45-40-7.5-60	400	75	600
11	AI-B45-40-10-60	400	100	600
12	AI-B45-40-15-60	400	150	600
13	AI-B45-45-7.5-60	450	75	600
14	AI-B45-45-10-60	450	100	600
15	AI-B45-45-15-60	450	150	600

**FINISH:** Hot Dip Galvanised (ASTM A-123 )  
Powder Coated and Painted

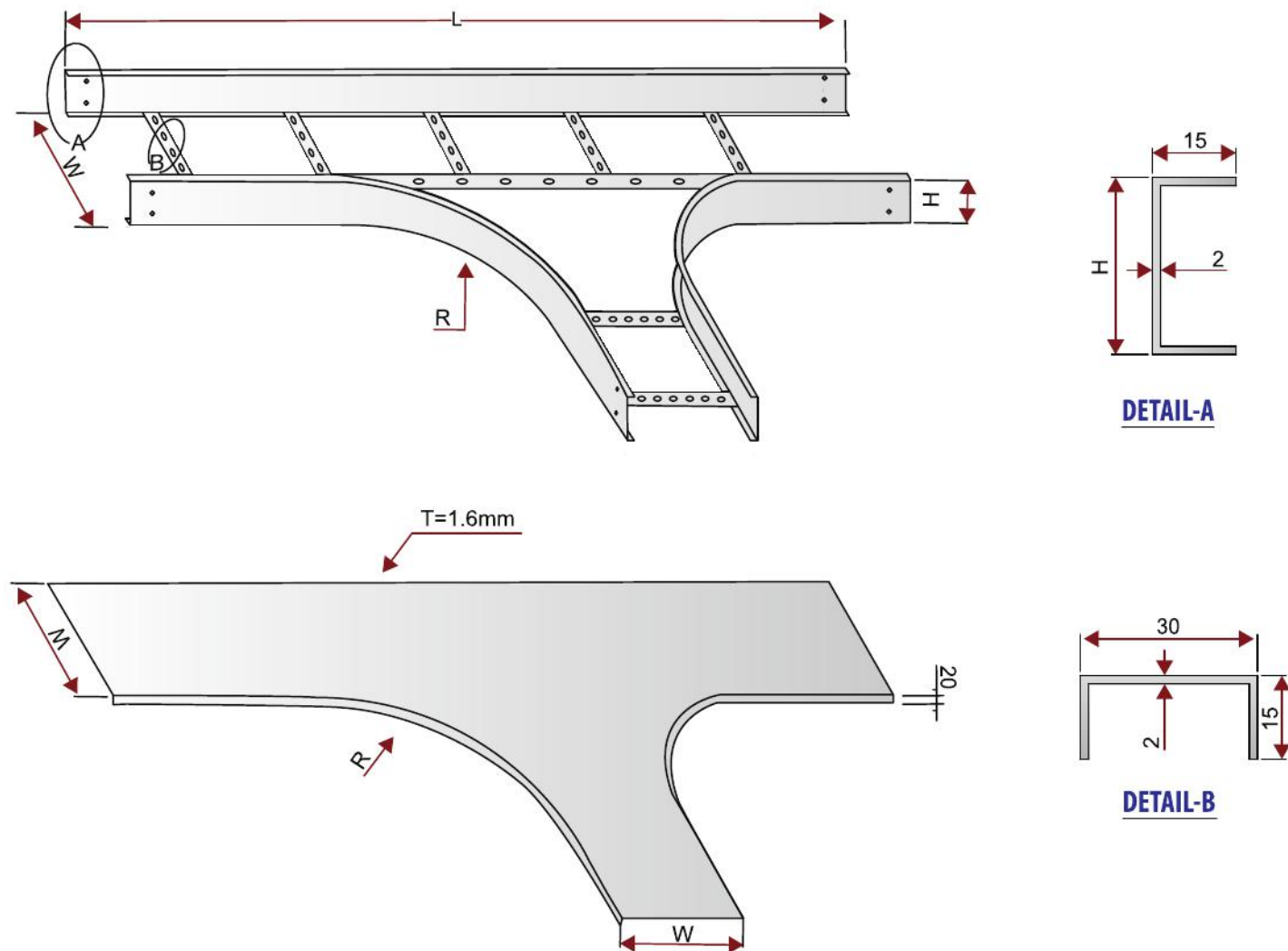
S.NO.	CODE NO.	W (mm)	H (mm)	R (mm)
16	AI-B45-50-7.5-60	500	75	600
17	AI-B45-50-10-60	500	100	600
18	AI-B45-50-15-60	500	150	600
19	AI-B45-60-7.5-60	600	75	600
20	AI-B45-60-10-60	600	100	600
21	AI-B45-60-15-60	600	150	600

**MATERIAL:** Hot Rolled/Cold Rolled  
Mild Steel/Stainless Steel

**Note:** Maximum Available Width 1000mm.



## Ladder Type Tee With Cover



**Note:** Maximum Available Width 1000mm.

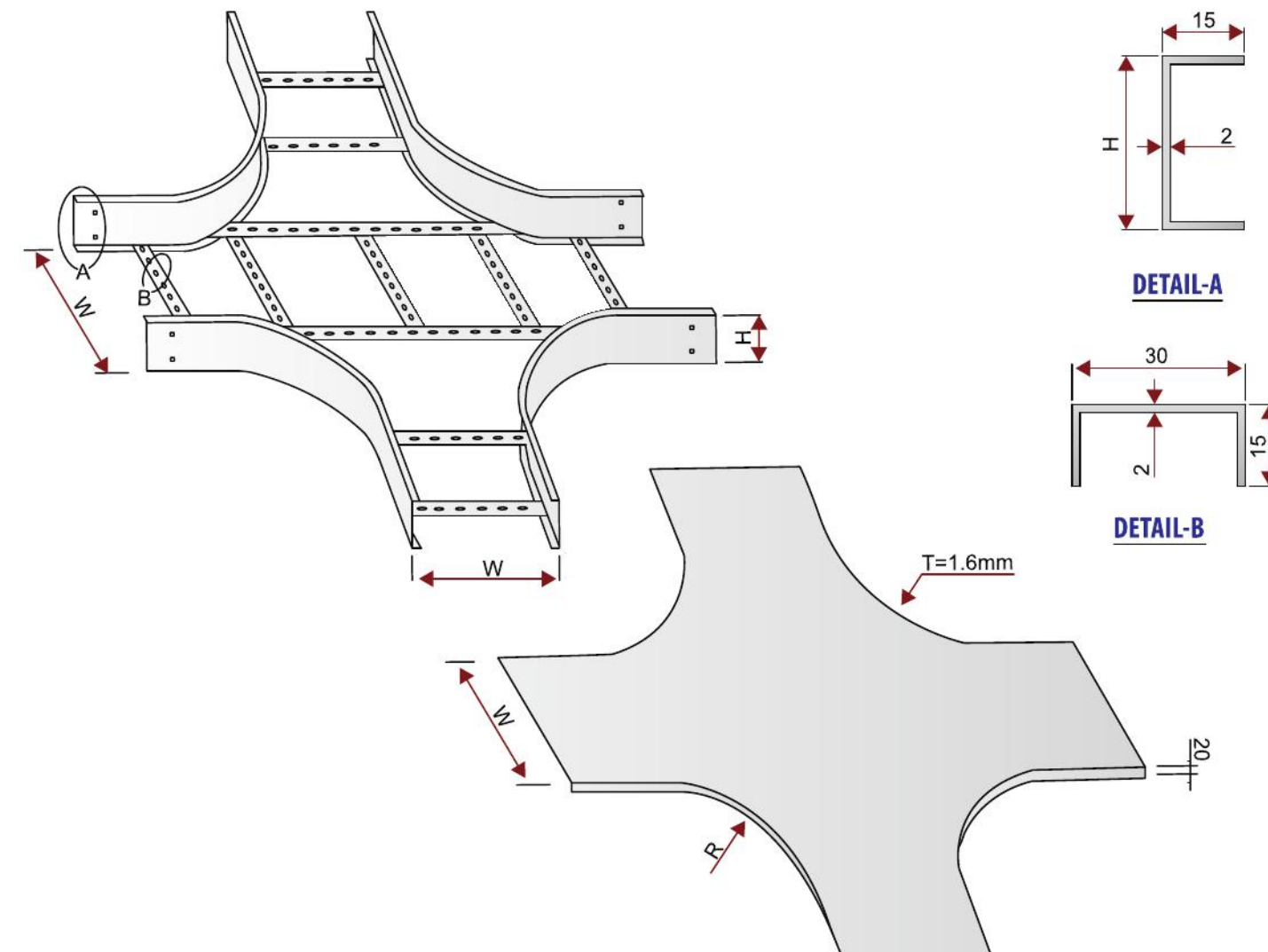
S.NO.	CODE NO.	W (mm)	H (mm)	R (mm)
1	AI-T-10-7.5-60	100	75	600
2	AI-T-10-10-60	100	100	600
3	AI-T-10-15-60	100	150	600
4	AI-T-20-7.5-60	200	75	600
5	AI-T-20-10-60	200	100	600
6	AI-T-20-15-60	200	150	600
7	AI-T-30-7.5-60	300	75	600
8	AI-T-30-10-30	300	100	600
9	AI-T-30-15-60	300	150	600
10	AI-T-40-7.5-60	400	75	600
11	AI-T-40-10-60	400	100	600
12	AI-T-40-15-60	400	150	600
13	AI-T-45-7.5-60	450	75	600
14	AI-T-45-10-60	450	100	600
15	AI-T-45-15-60	450	150	600

**FINISH:** Hot Dip Galvanised (ASTM A-123 )  
Powder Coated and Painted

S.NO.	CODE NO.	W (mm)	H (mm)	R (mm)
16	AI-T-50-7.5-60	500	75	600
17	AI-T-50-10-60	500	100	600
18	AI-T-50-15-60	500	150	600
19	AI-T-60-7.5-60	600	75	600
20	AI-T-60-10-60	600	100	600
21	AI-T-60-15-60	600	150	600

**MATERIAL:** Hot Rolled/Cold Rolled  
Mild Steel/Stainless Steel

## Ladder Type Cross with Cover



**Note:** Maximum Available Width 1000mm.

S.NO.	CODE NO.	W (mm)	H (mm)	R (mm)
1	AI-CR-10-7.5-60	100	75	600
2	AI-CR-10-10-60	100	100	600
3	AI-CR-10-15-60	100	150	600
4	AI-CR-20-7.5-60	200	75	600
5	AI-CR-20-10-60	200	100	600
6	AI-CR-20-15-60	200	150	600
7	AI-CR-30-7.5-60	300	75	600
8	AI-CR-30-10-30	300	100	600
9	AI-CR-30-15-60	300	150	600
10	AI-CR-40-7.5-60	400	75	600
11	AI-CR-40-10-60	400	100	600
12	AI-CR-40-15-60	400	150	600
13	AI-CR-45-7.5-60	450	75	600
14	AI-CR-45-10-60	450	100	600
15	AI-CR-45-15-60	450	150	600

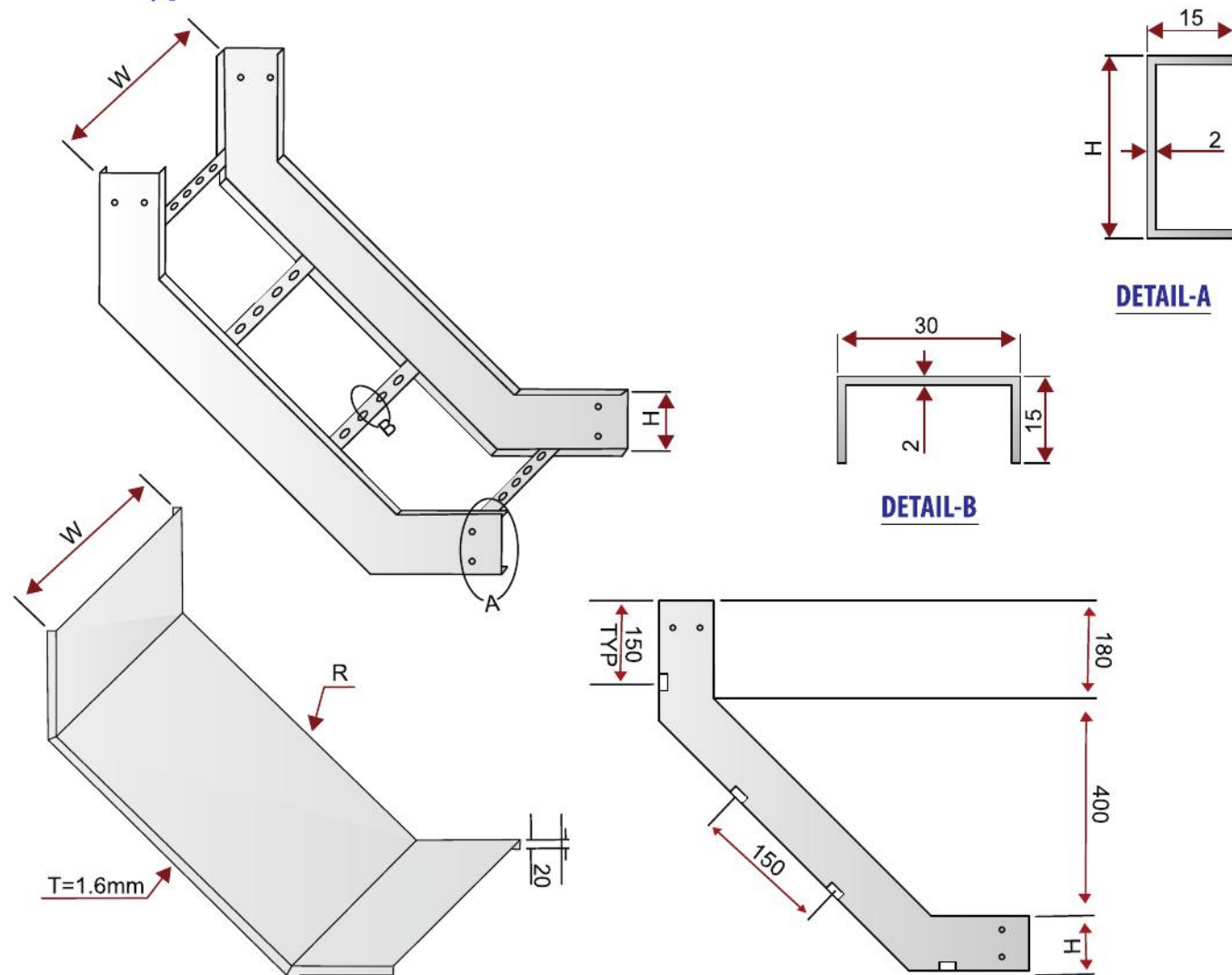
**FINISH:** Hot Dip Galvanised (ASTM A-123 )  
Powder Coated and Painted

S.NO.	CODE NO.	W (mm)	H (mm)	R (mm)
16	AI-CR-50-7.5-60	500	75	600
17	AI-CR-50-10-60	500	100	600
18	AI-CR-50-15-60	500	150	600
19	AI-CR-60-7.5-60	600	75	600
20	AI-CR-60-10-60	600	100	600
21	AI-CR-60-15-60	600	150	600

**MATERIAL:** Hot Rolled/Cold Rolled  
Mild Steel/Stainless Steel



## Ladder Type Inside Riser with Cover



**Note:** Maximum Available Width 1000mm.

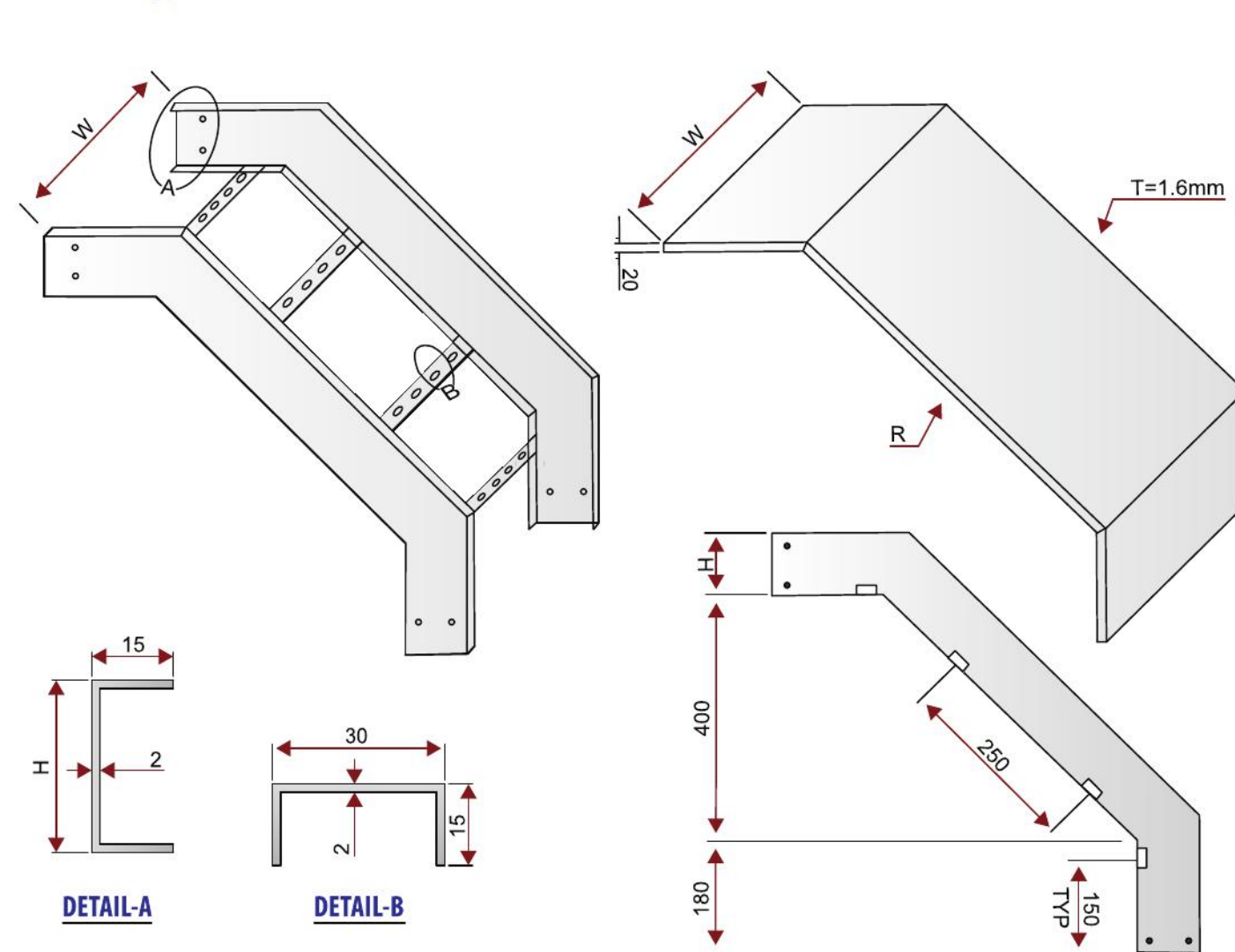
S.NO.	CODE NO.	W (mm)	H (mm)
1	AI-IR-10-7.5	100	75
2	AI-IR-10-10	100	100
3	AI-IR-10-15	100	150
4	AI-IR-20-7.5	200	75
5	AI-IR-20-10	200	100
6	AI-IR-20-15	200	150
7	AI-IR-30-7.5	300	75
8	AI-IR-30-10	300	100
9	AI-IR-30-15	300	150
10	AI-IR-40-7.5	400	75
11	AI-IR-40-10	400	100
12	AI-IR-40-15	400	150
13	AI-IR-45-7.5	450	75
14	AI-IR-45-10	450	100
15	AI-IR-45-15	450	150

**FINISH:** Hot Dip Galvanised (ASTM A-123)  
Powder Coated and Painted

S.NO.	CODE NO.	W (mm)	H (mm)
16	AI-IR-50-7.5	500	75
17	AI-IR-50-10	500	100
18	AI-IR-50-15	500	150
19	AI-IR-60-7.5	600	75
20	AI-IR-60-10	600	100
21	AI-IR-60-15	600	150

**MATERIAL:** Hot Rolled/Cold Rolled  
Mild Steel/Stainless Steel

## Ladder Type Outside Riser with Cover



**Note:** Maximum Available Width 1000mm.

S.NO.	CODE NO.	W (mm)	H (mm)
1	AI-OR-10-7.5	100	75
2	AI-OR-10-10	100	100
3	AI-OR-10-15	100	150
4	AI-OR-20-7.5	200	75
5	AI-OR-20-10	200	100
6	AI-OR-20-15	200	150
7	AI-OR-30-7.5	300	75
8	AI-OR-30-10	300	100
9	AI-OR-30-15	300	150
10	AI-OR-40-7.5	400	75
11	AI-OR-40-10	400	100
12	AI-OR-40-15	400	150
13	AI-OR-45-7.5	450	75
14	AI-OR-45-10	450	100
15	AI-OR-45-15	450	150

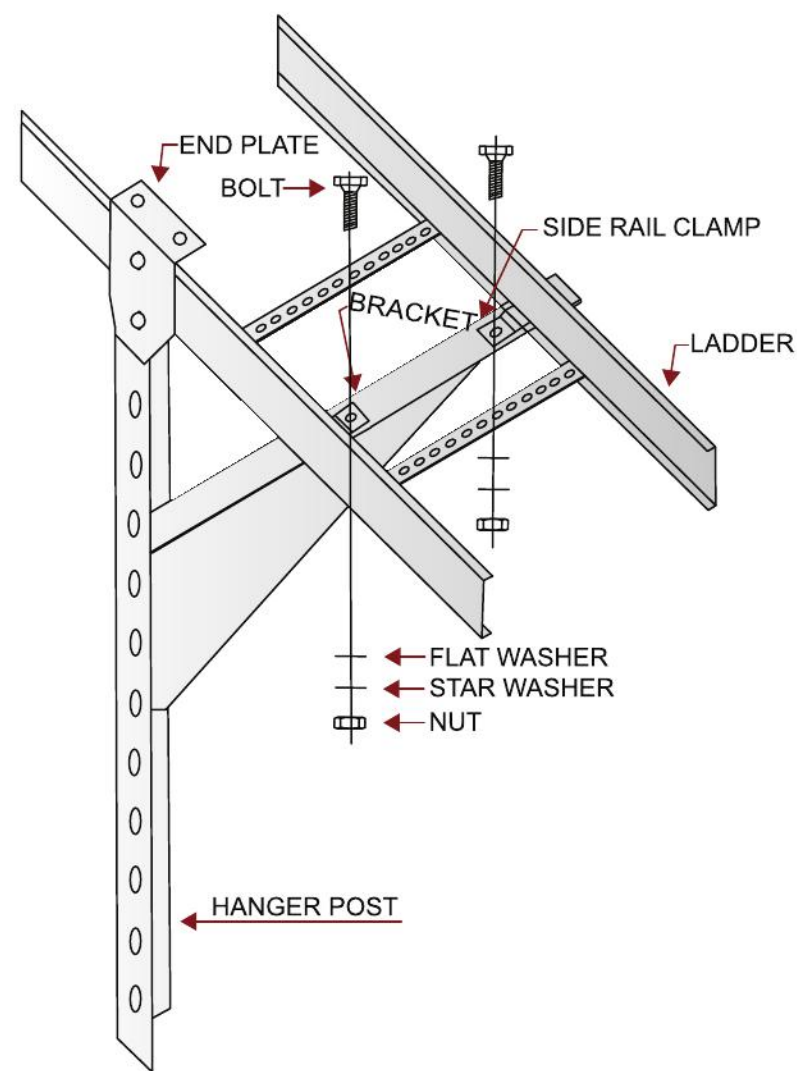
**FINISH:** Hot Dip Galvanised (ASTM A-123)  
Powder Coated and Painted

S.NO.	CODE NO.	W (mm)	H (mm)
16	AI-OR-50-7.5	500	75
17	AI-OR-50-10	500	100
18	AI-OR-50-15	500	150
19	AI-OR-60-7.5	600	75
20	AI-OR-60-10	600	100
21	AI-OR-60-15	600	150

**MATERIAL:** Hot Rolled/Cold Rolled  
Mild Steel/Stainless Steel

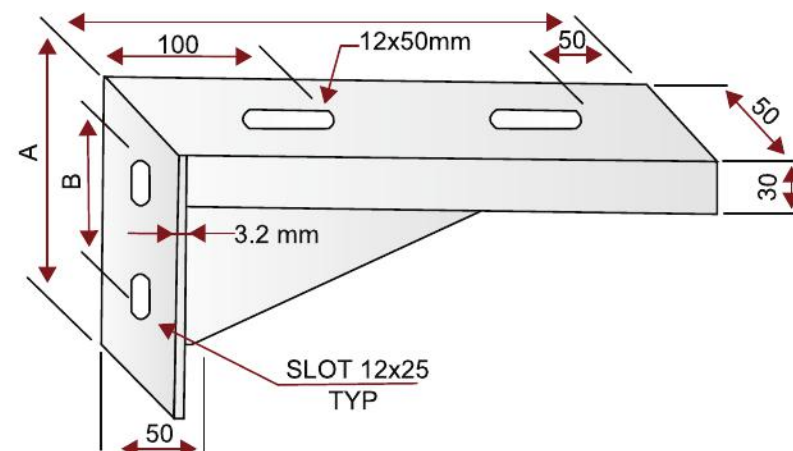


### Hanger Post Assembly Arrangement With Bracket



S.NO.	CODE NO.	L (mm)	TRAY (mm)	A (mm)	B (mm)	ALLOWABLE STATIC LOAD (KG)
1	AI-BR-10	200	100	150	80	200
2	AI-BR-20	300	200	150	100	225
3	AI-BR-30	400	300	150	100	250
4	AI-BR-40	500	400	150	100	275
5	AI-BR-50	600	500	200	150	300
6	AI-BR-60	700	600	200	150	350

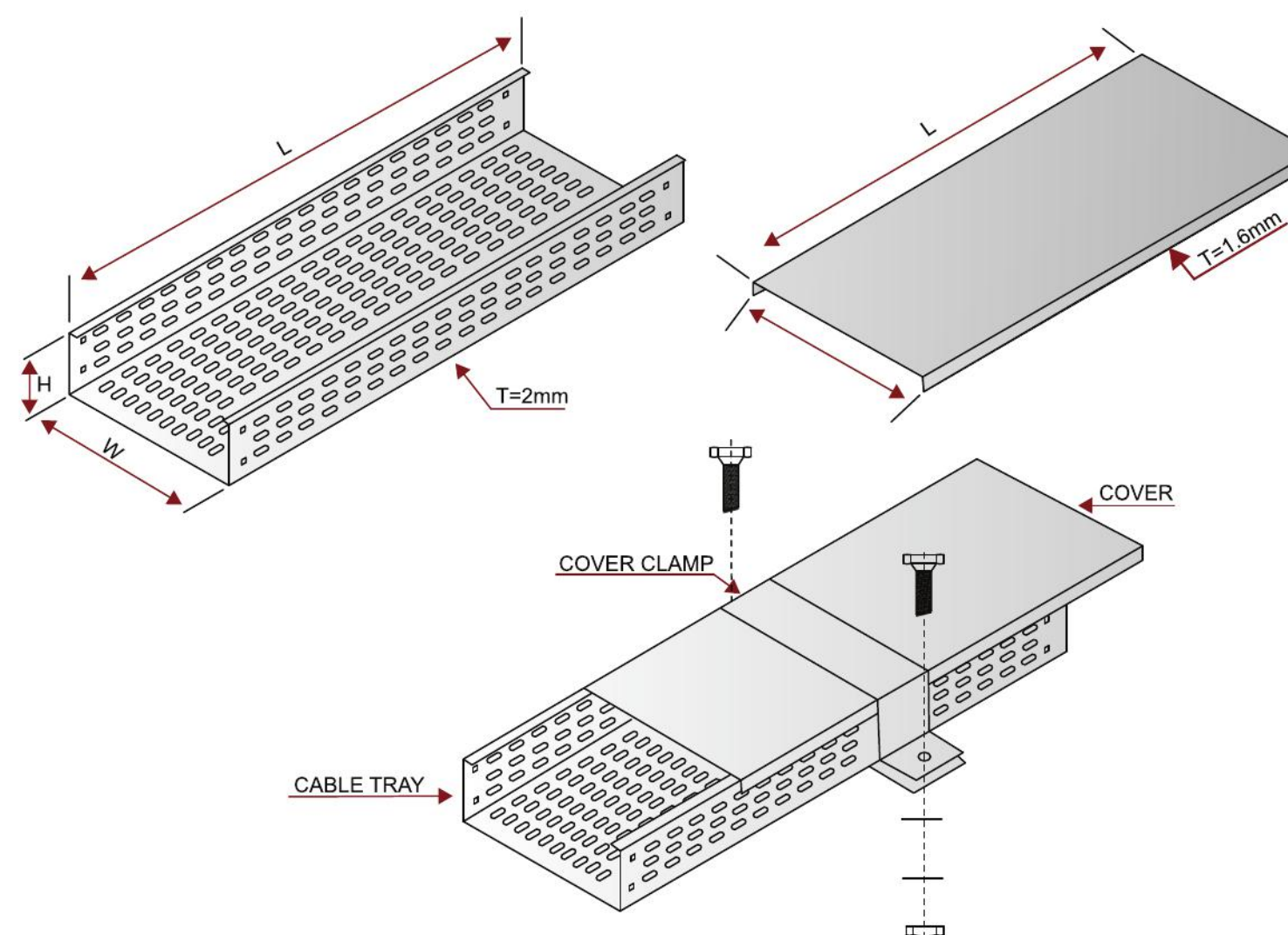
**FINISH:** Hot Dip Galvanised (ASTM A-123)  
Powder Coated and Painted



**MATERIAL:** Hot Rolled/Cold Rolled  
Mild Steel/Stainless Steel

**Note:** Maximum Available Width 1000mm.

### Perforated Type Cable Tray With Cover



S.NO.	CODE NO.	W (mm)	H (mm)	L (mm)
1	AI-CT-10-7.5	100	75	240
2	AI-CT-10-10	100	100	240
3	AI-CT-20-7.5	200	75	240
4	AI-CT-20-10	200	100	240
5	AI-CT-30-7.5	300	75	240
6	AI-CT-30-10	300	100	240
7	AI-CT-40-7.5	400	75	240
8	AI-CT-40-10	400	100	240
9	AI-CT-45-7.5	450	75	240
10	AI-CT-45-10	450	100	240
11	AI-CT-50-7.5	500	75	240
12	AI-CT-50-10	500	100	240
13	AI-CT-60-7.5	600	75	240
14	AI-CT-60-10	600	100	240

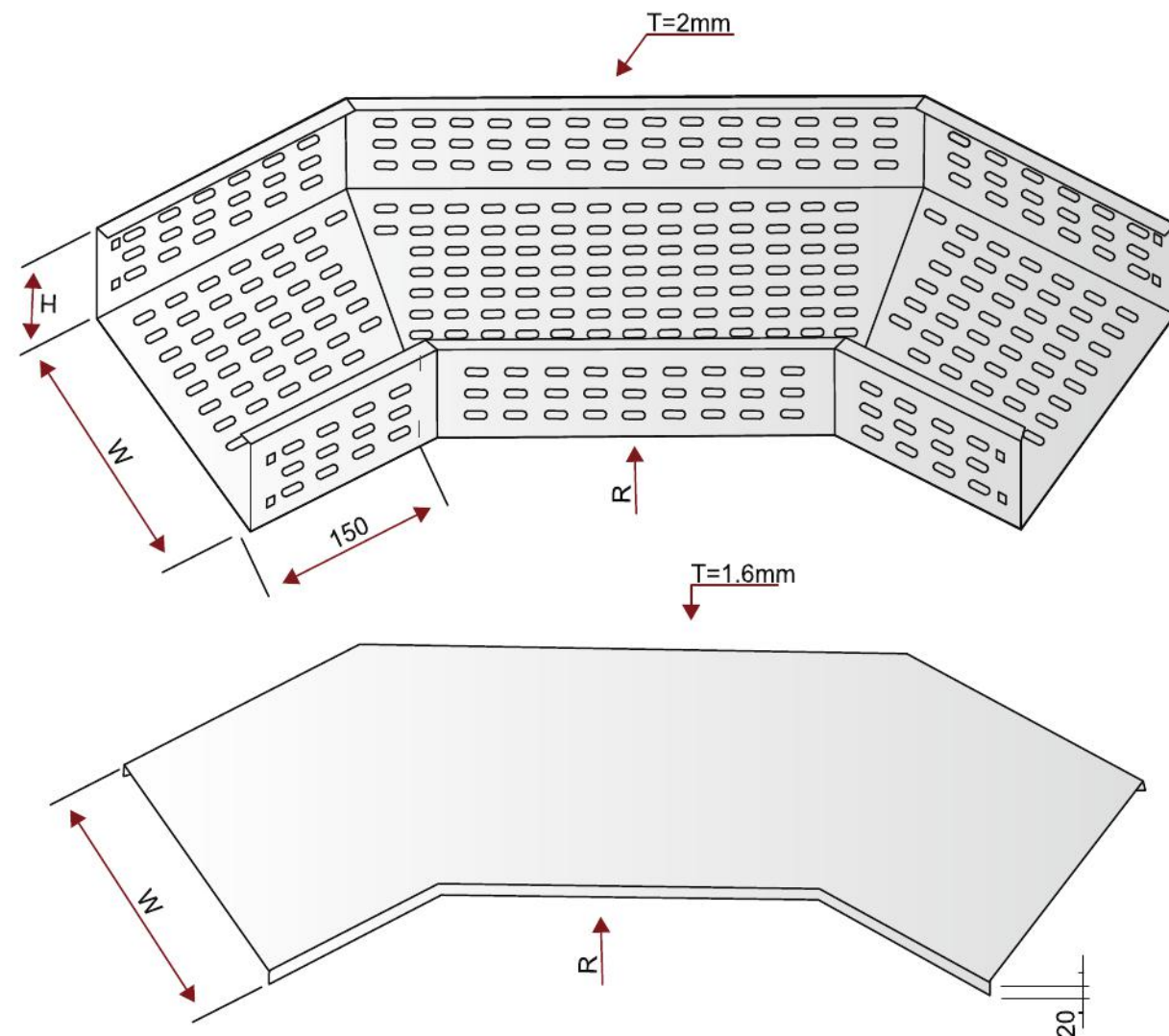
**FINISH:** Hot Dip Galvanised (ASTM A-123)  
Powder Coated and Painted

**MATERIAL:** Hot Rolled/Cold Rolled  
Mild Steel/Stainless Steel  
**SIZE:** Available in 2.44/3 Meter Length

**Note:** Maximum Available Width 1000mm & Length 6mtr.



## Perforated Type Horizontal Bend 90° With Cover

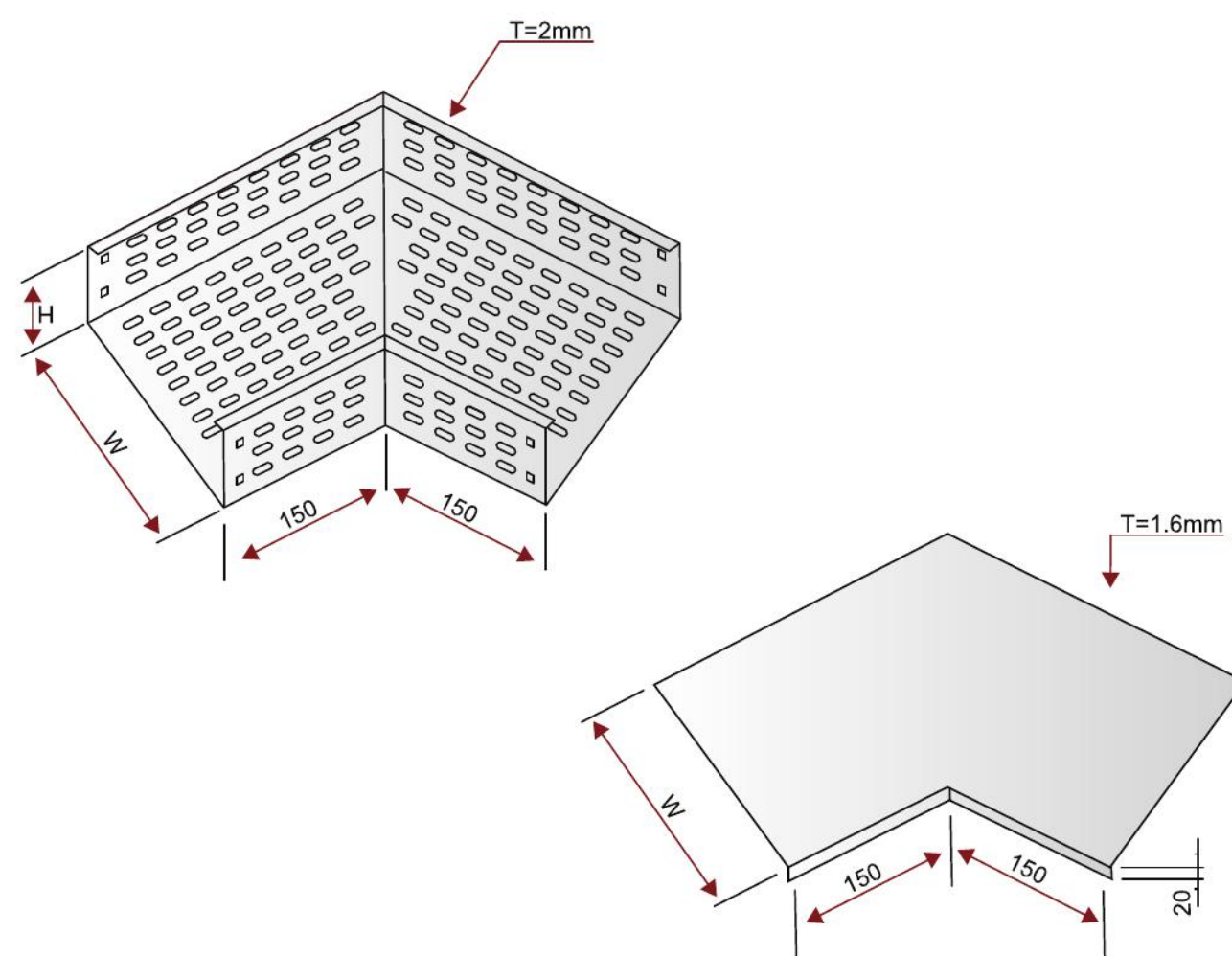


S.NO.	CODE NO.	W (mm)	H (mm)	R (mm)
1	AI-B90-10-7.5-60	100	75	300
2	AI-B90-10-10-60	100	100	300
3	AI-B90-20-7.5-60	200	75	300
4	AI-B90-20-10-60	200	100	300
5	AI-B90-30-7.5-60	300	75	300
6	AI-B90-30-10-60	300	100	300
7	AI-B90-40-7.5-60	400	75	300
8	AI-B90-40-10-60	400	100	300
9	AI-B90-45-7.5-60	450	75	300
10	AI-B90-45-10-60	450	100	300
11	AI-B90-50-7.5-30	500	75	300
12	AI-B90-50-10-60	500	100	300
13	AI-B90-60-7.5-60	600	75	300
14	AI-B90-60-10-60	600	100	300

**FINISH:** Hot Dip Galvanised (ASTM A-123)  
Powder Coated and Painted

**MATERIAL:** Hot Rolled/Cold Rolled  
Mild Steel/Stainless Steel

## Perforated Type Horizontal Bend 45° With Cover



S.NO.	CODE NO.	W (mm)	H (mm)
1	AI-B45-10-7.5-60	100	75
2	AI-B45-10-10-60	100	100
3	AI-B45-20-7.5-60	200	75
4	AI-B45-20-10-60	200	100
5	AI-B45-30-7.5-60	300	75
6	AI-B45-30-10-60	300	100
7	AI-B45-40-7.5-60	400	75
8	AI-B45-40-10-60	400	100
9	AI-B45-45-7.5-60	450	75
10	AI-B45-45-10-60	450	100
11	AI-B45-50-7.5-60	500	75
12	AI-B45-50-10-60	500	100
13	AI-B45-60-7.5-60	600	75
14	AI-B45-60-10-60	600	100

**FINISH:** Hot Dip Galvanised (ASTM A-123)  
Powder Coated and Painted

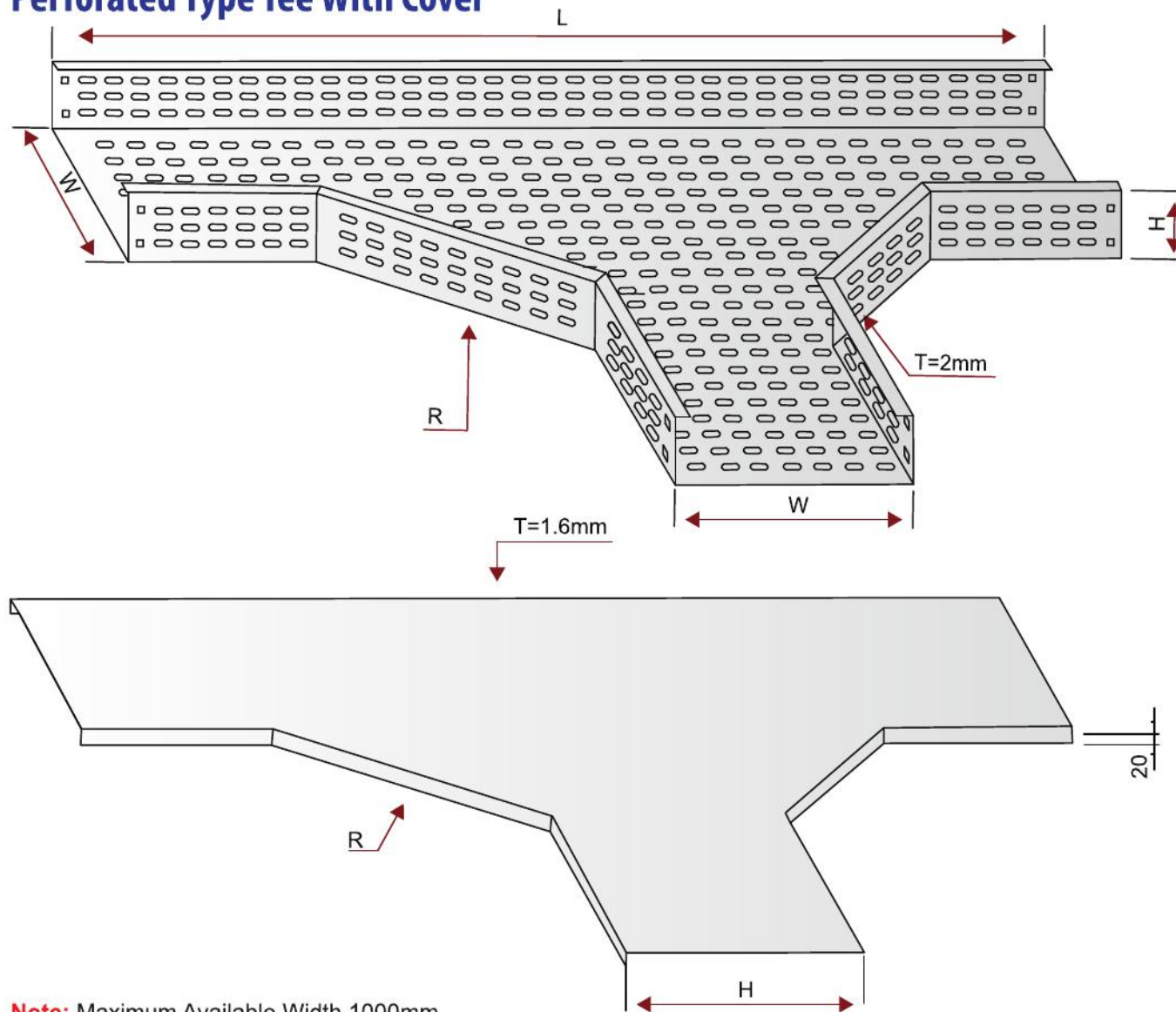
**MATERIAL:** Hot Rolled/Cold Rolled  
Mild Steel/Stainless Steel

**Note:** Maximum Available Width 1000mm.





## Perforated Type Tee With Cover

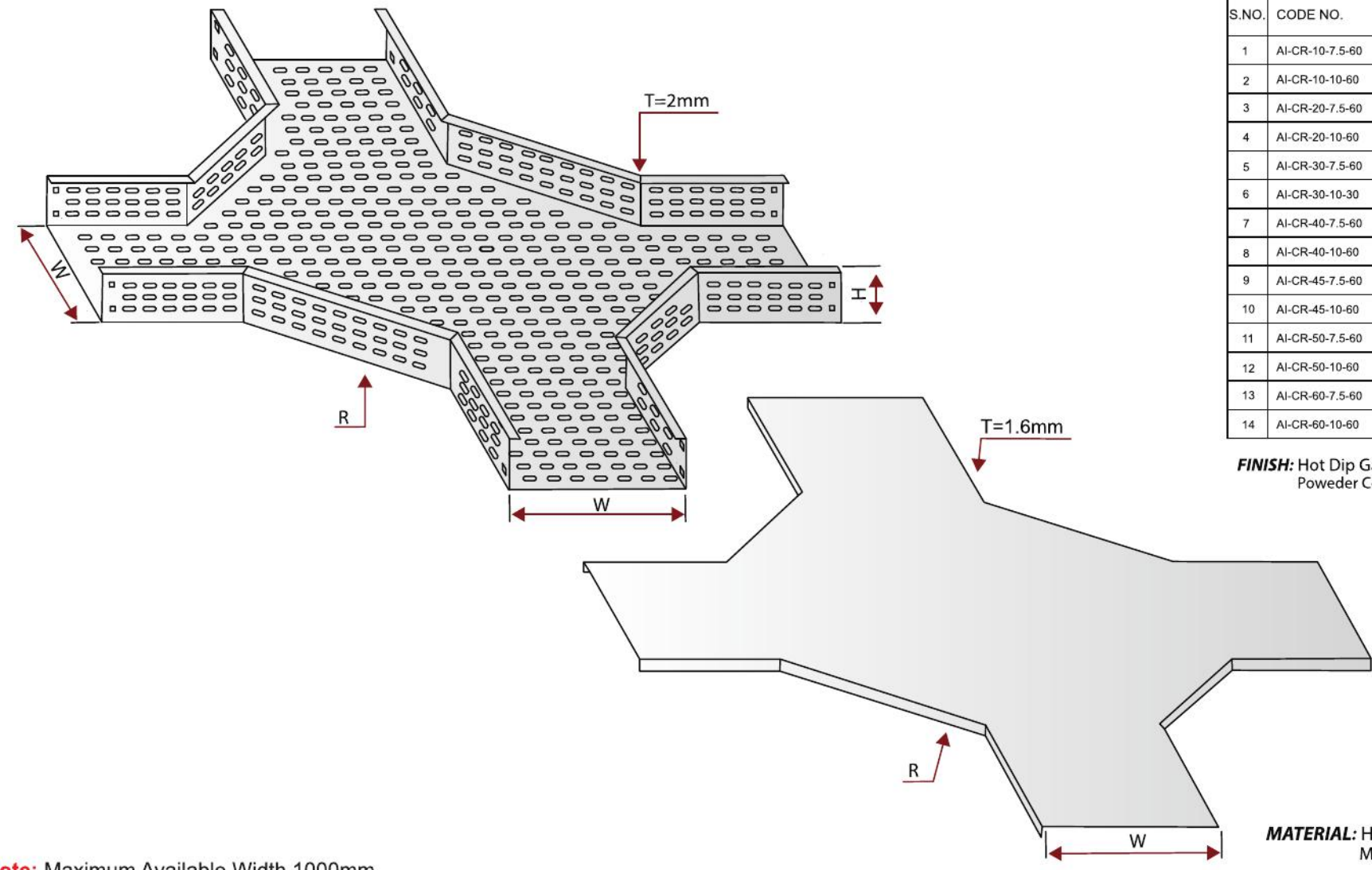


S.NO.	CODE NO.	W (mm)	H (mm)	R (mm)
1	AI-T-10-7.5-60	100	75	300
2	AI-T-10-10-60	100	100	300
3	AI-T-20-7.5-60	200	75	300
4	AI-T-20-10-60	200	100	300
5	AI-T-30-7.5-60	300	75	300
6	AI-T-30-10-30	300	100	300
7	AI-T-40-7.5-60	400	75	300
8	AI-T-40-10-60	400	100	300
9	AI-T-45-7.5-60	450	75	300
10	AI-T-45-10-60	450	100	300
11	AI-T-50-7.5-60	500	75	300
12	AI-T-50-10-60	500	100	300
13	AI-T-60-7.5-60	600	75	300
14	AI-T-60-10-60	600	100	300

**FINISH:** Hot Dip Galvanised (ASTM A-123)  
Powder Coated and Painted

**MATERIAL:** Hot Rolled/Cold Rolled  
Mild Steel/Stainless Steel

## Perforated Type Cross With Cover



S.NO.	CODE NO.	W (mm)	H (mm)	R (mm)
1	AI-CR-10-7.5-60	100	75	300
2	AI-CR-10-10-60	100	100	300
3	AI-CR-20-7.5-60	200	75	300
4	AI-CR-20-10-60	200	100	300
5	AI-CR-30-7.5-60	300	75	300
6	AI-CR-30-10-30	300	100	300
7	AI-CR-40-7.5-60	400	75	300
8	AI-CR-40-10-60	400	100	300
9	AI-CR-45-7.5-60	450	75	300
10	AI-CR-45-10-60	450	100	300
11	AI-CR-50-7.5-60	500	75	300
12	AI-CR-50-10-60	500	100	300
13	AI-CR-60-7.5-60	600	75	300
14	AI-CR-60-10-60	600	100	300

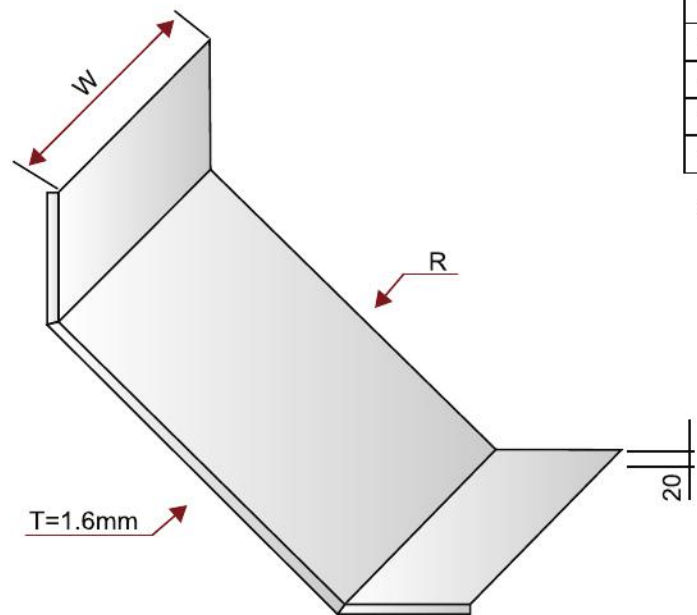
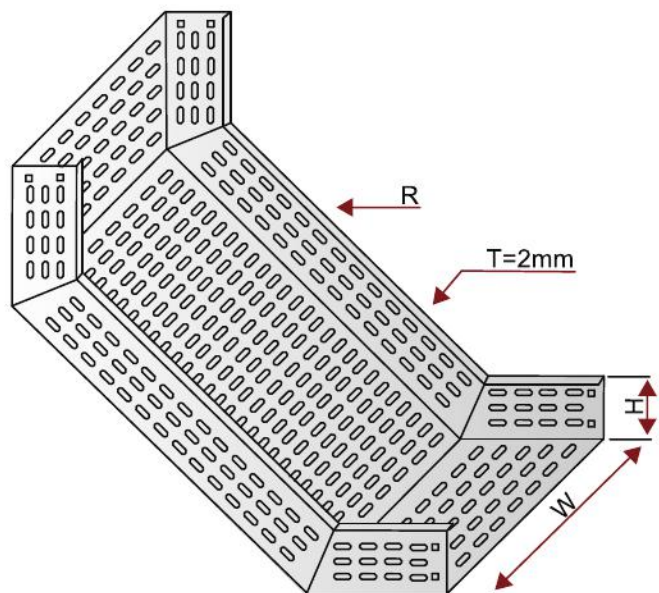
**FINISH:** Hot Dip Galvanised (ASTM A-123)  
Powder Coated and Painted

**MATERIAL:** Hot Rolled/Cold Rolled  
Mild Steel/Stainless Steel

**Note:** Maximum Available Width 1000mm.



## Perforated Type Inside Riser With Cover



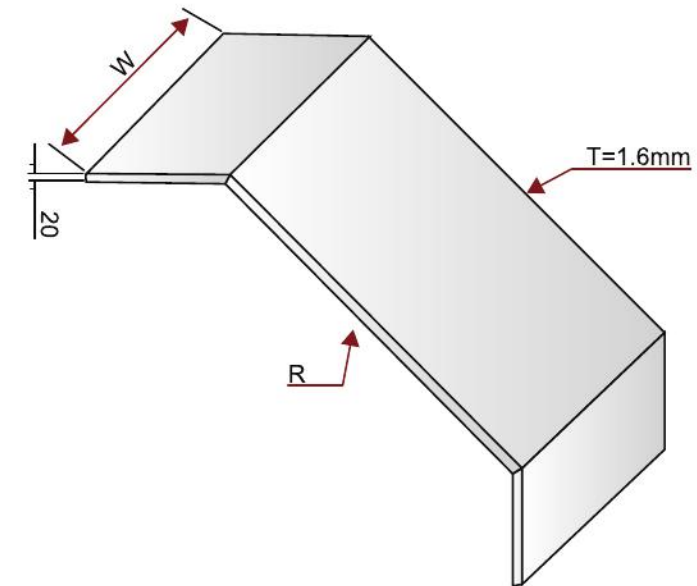
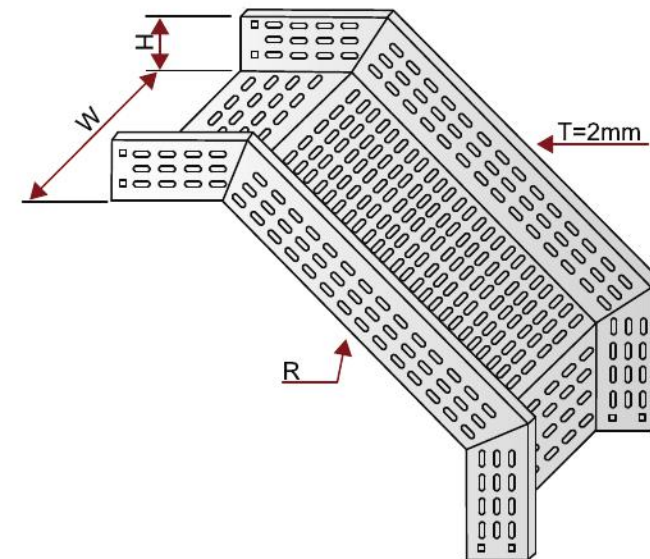
S.NO.	CODE NO.	W (mm)	H (mm)	R (mm)
1	AI-IR-10-7.5-60	100	75	300
2	AI-IR-10-10-60	100	100	300
3	AI-IR-20-7.5-60	200	75	300
4	AI-IR-20-10-60	200	100	300
5	AI-IR-30-7.5-60	300	75	300
6	AI-IR-30-10-60	300	100	300
7	AI-IR-40-7.5-60	400	75	300
8	AI-IR-40-10-60	400	100	300
9	AI-IR-45-7.5-60	450	75	300
10	AI-IR-45-10-60	450	100	300
11	AI-IR-50-7.5-60	500	75	300
12	AI-IR-50-10-60	500	100	300
13	AI-IR-60-7.5-60	600	75	300
14	AI-IR-60-10-60	600	100	300

**FINISH:** Hot Dip Galvanised (ASTM A-123)  
Powder Coated and Painted

**MATERIAL:** Hot Rolled/Cold Rolled  
Mild Steel/Stainless Steel

**Note:** Maximum Available Width 1000mm.

## Perforated Type Outside Riser With Cover



S.NO.	CODE NO.	W (mm)	H (mm)	R (mm)
1	A-IR-10-7.5-60	100	75	300
2	A-IR-10-10-60	100	100	300
3	A-IR-20-7.5-60	200	75	300
4	A-IR-20-10-60	200	100	300
5	A-IR-30-7.5-60	300	75	300
6	A-IR-30-10-60	300	100	300
7	A-IR-40-7.5-60	400	75	300
8	A-IR-40-10-60	400	100	300
9	A-IR-45-7.5-60	450	75	300
10	A-IR-45-10-60	450	100	300
11	A-IR-50-7.5-60	500	75	300
12	A-IR-50-10-60	500	100	300
13	A-IR-60-7.5-60	600	75	300
14	A-IR-60-10-60	600	100	300

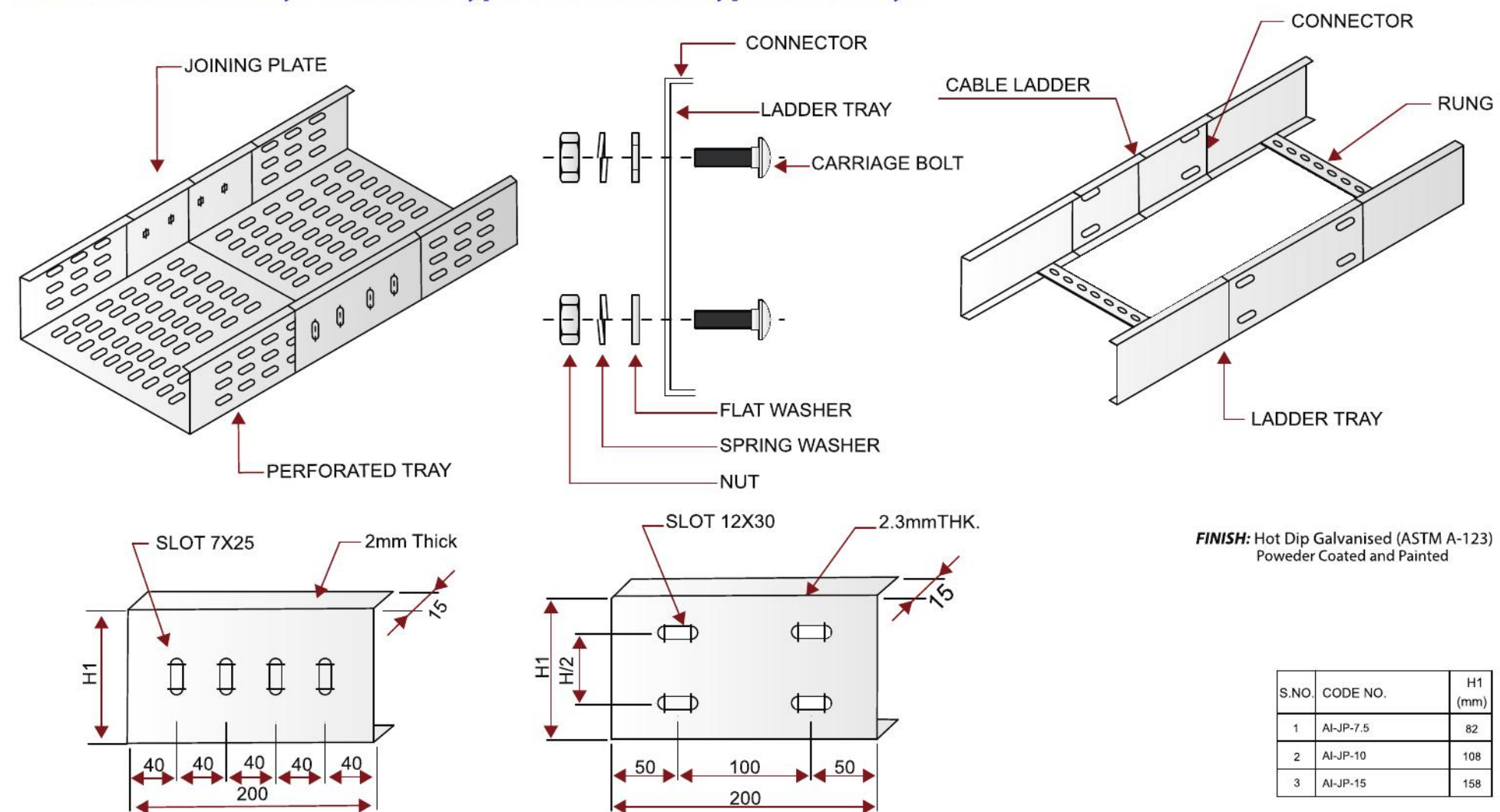
**FINISH:** Hot Dip Galvanised (ASTM A-123)  
Powder Coated and Painted

**MATERIAL:** Hot Rolled/Cold Rolled  
Mild Steel/Stainless Steel

**Note:** Maximum Available Width 1000mm.

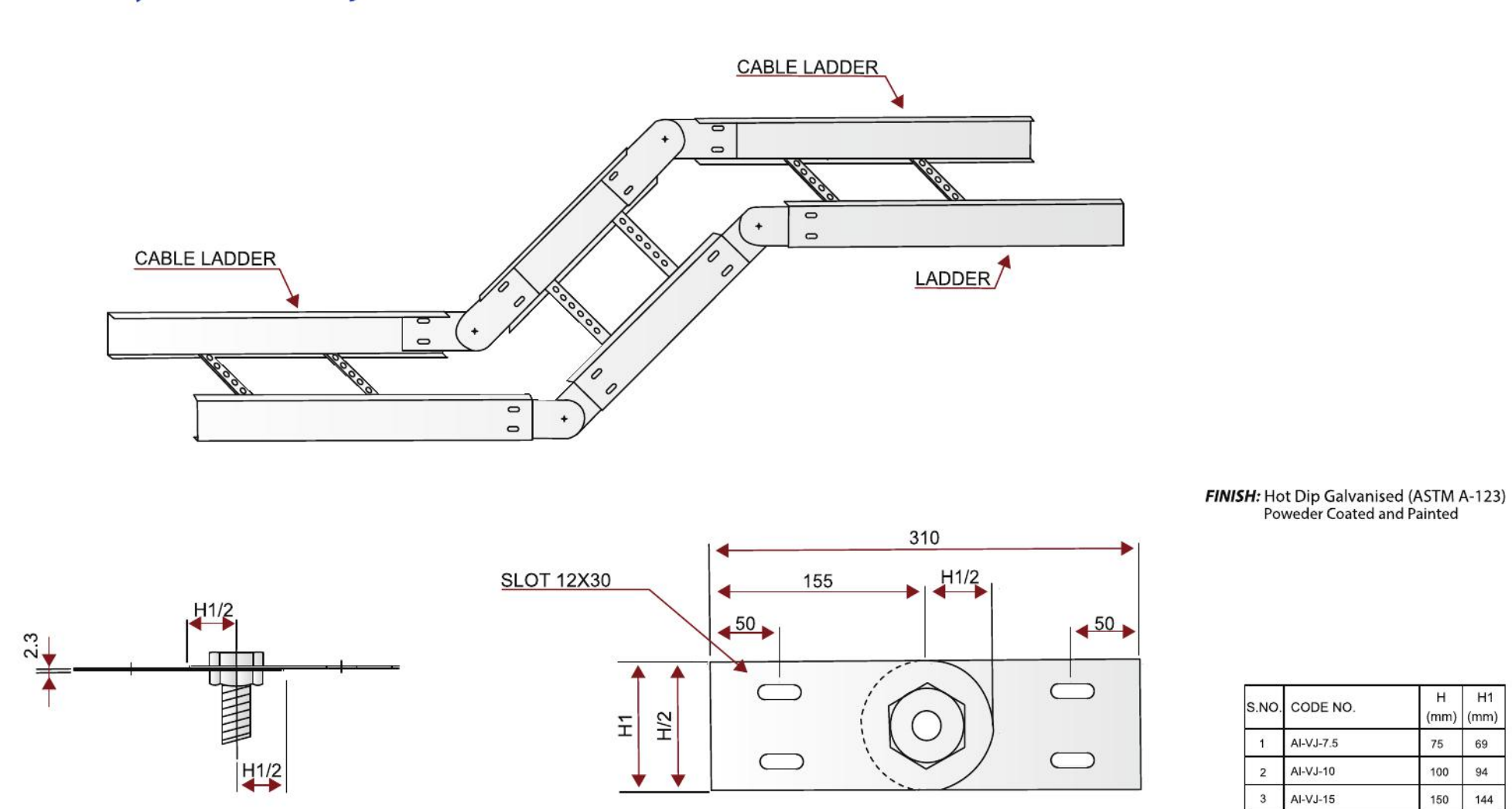


## Joint Plate Assembly For Ladder Type & Perforated Type Cable Tray.



**Note:** Maximum Available Width 1000mm.

## Assembly For Vertical Adjustable Joint Plate

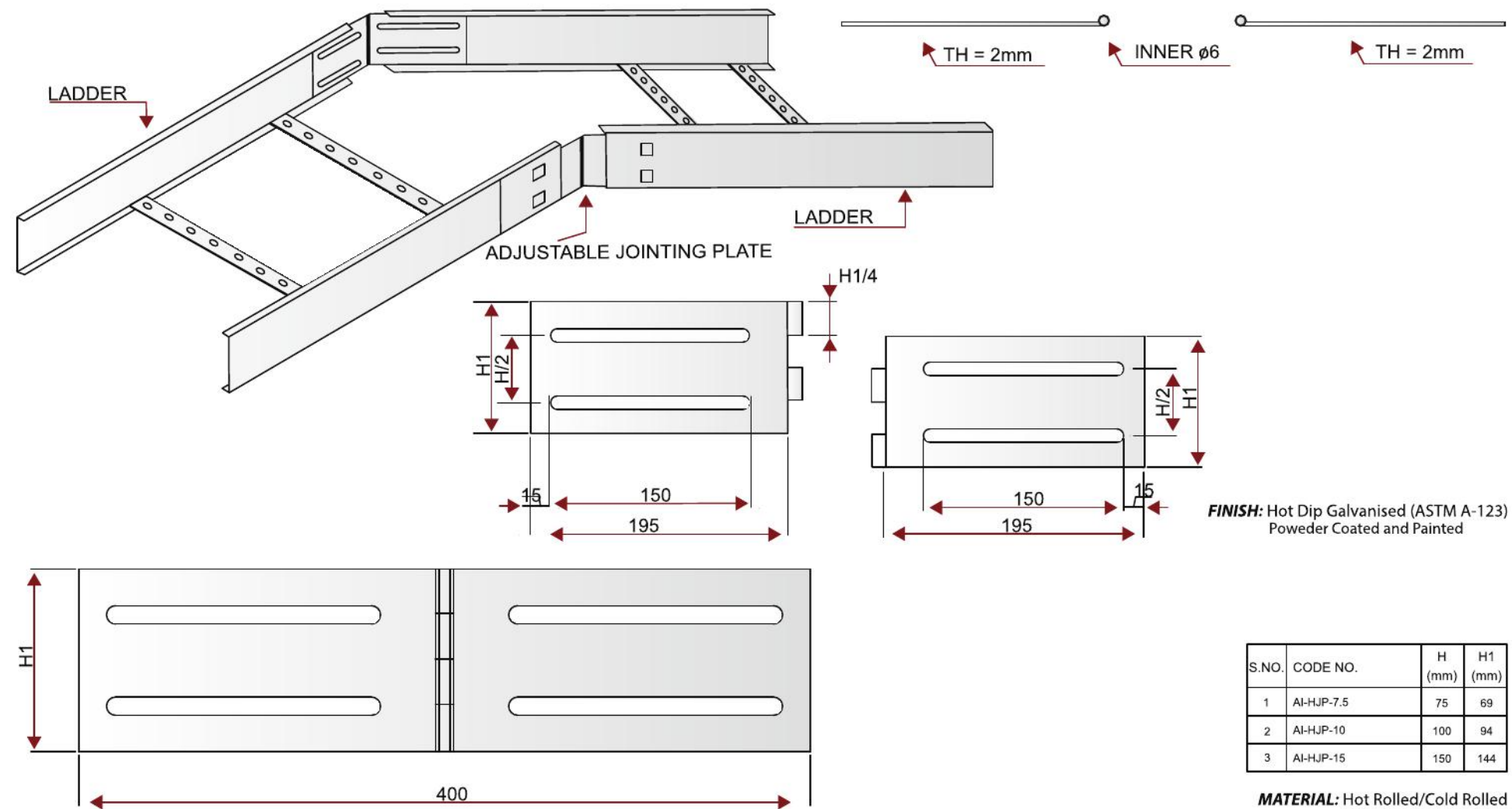


**Note:** Maximum Available Width 1000mm.





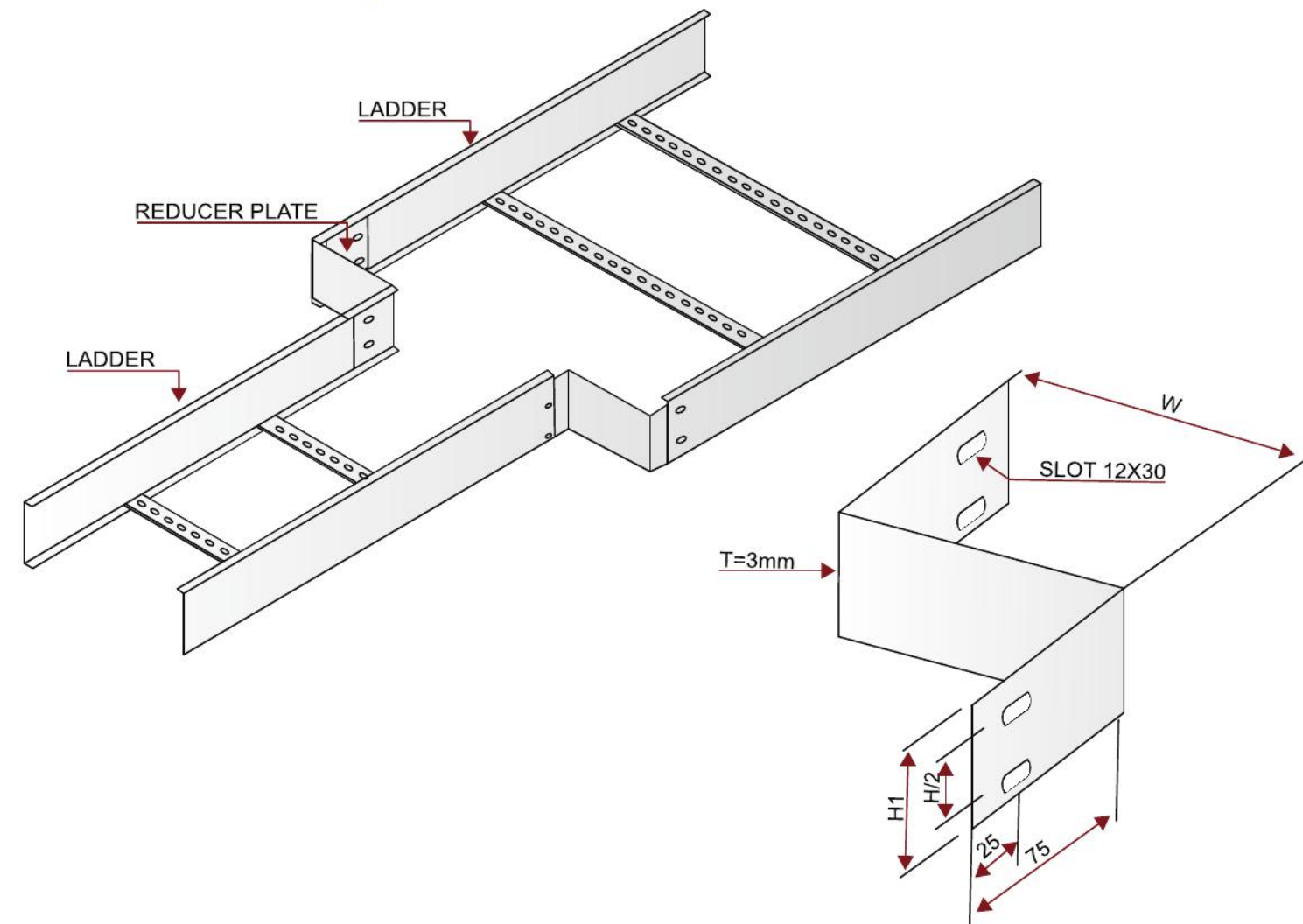
## Assembly For Horizontal Adjustable Joint Plate



**Note:** Maximum Available Width 1000mm.



## Reducer Plate Assembly



S.NO.	CODE NO.	W1 (mm)	H (mm)	H1 (mm)
1	AI-RP-10-7.5	100	75	70
2	AI-RP-10-10	100	100	94
3	AI-RP-10-15	100	150	144
4	AI-RP-20-7.5	200	75	70
5	AI-RP-20-10	200	100	94
6	AI-RP-20-15	200	150	144
7	AI-RP-30-7.5	300	75	70
8	AI-RP-30-10	300	100	94
9	AI-RP-30-15	300	150	144
10	AI-RP-40-7.5	400	75	70
11	AI-RP-40-10	400	100	94
12	AI-RP-40-15	400	150	144
13	AI-RP-45-7.5	450	75	70
14	AI-RP-45-10	450	100	94
15	AI-RP-45-15	450	150	144

**FINISH:** Hot Dip Galvanised (ASTM A-123)  
Powder Coated and Painted

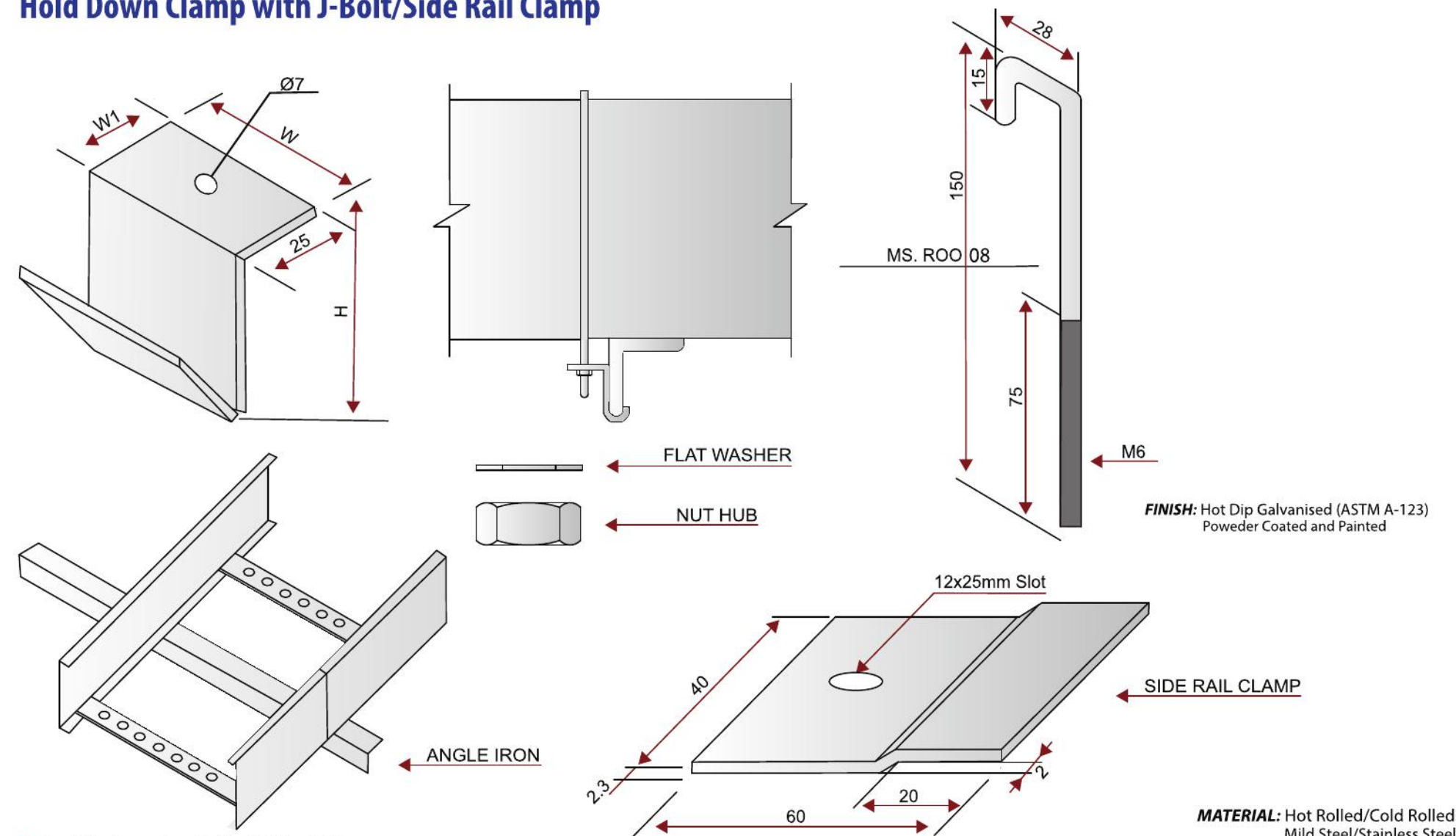
S.NO.	CODE NO.	W (mm)	H (mm)
16	AI-RP-50-7.5	500	70
17	AI-RP-50-10	500	94
18	AI-RP-50-15	500	144
19	AI-RP-60-7.5	600	70
20	AI-RP-60-10	600	94
21	AI-RP-60-15	600	144

**MATERIAL:** Hot Rolled/Cold Rolled  
Mild Steel/Stainless Steel

**Note:** Maximum Available Width 1000mm.

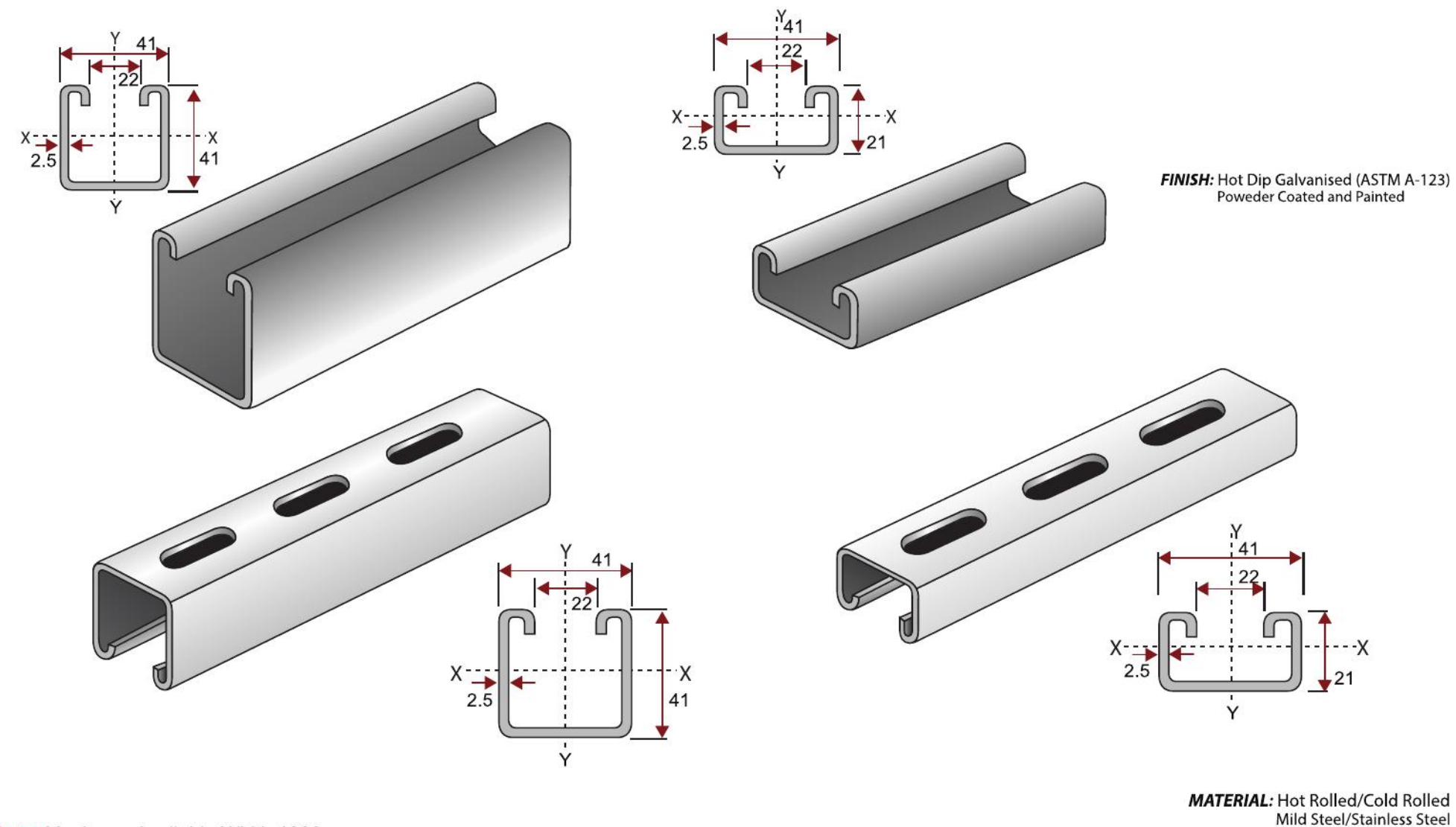


## Hold Down Clamp with J-Bolt/Side Rail Clamp



**Note:** Maximum Available Width 1000mm.

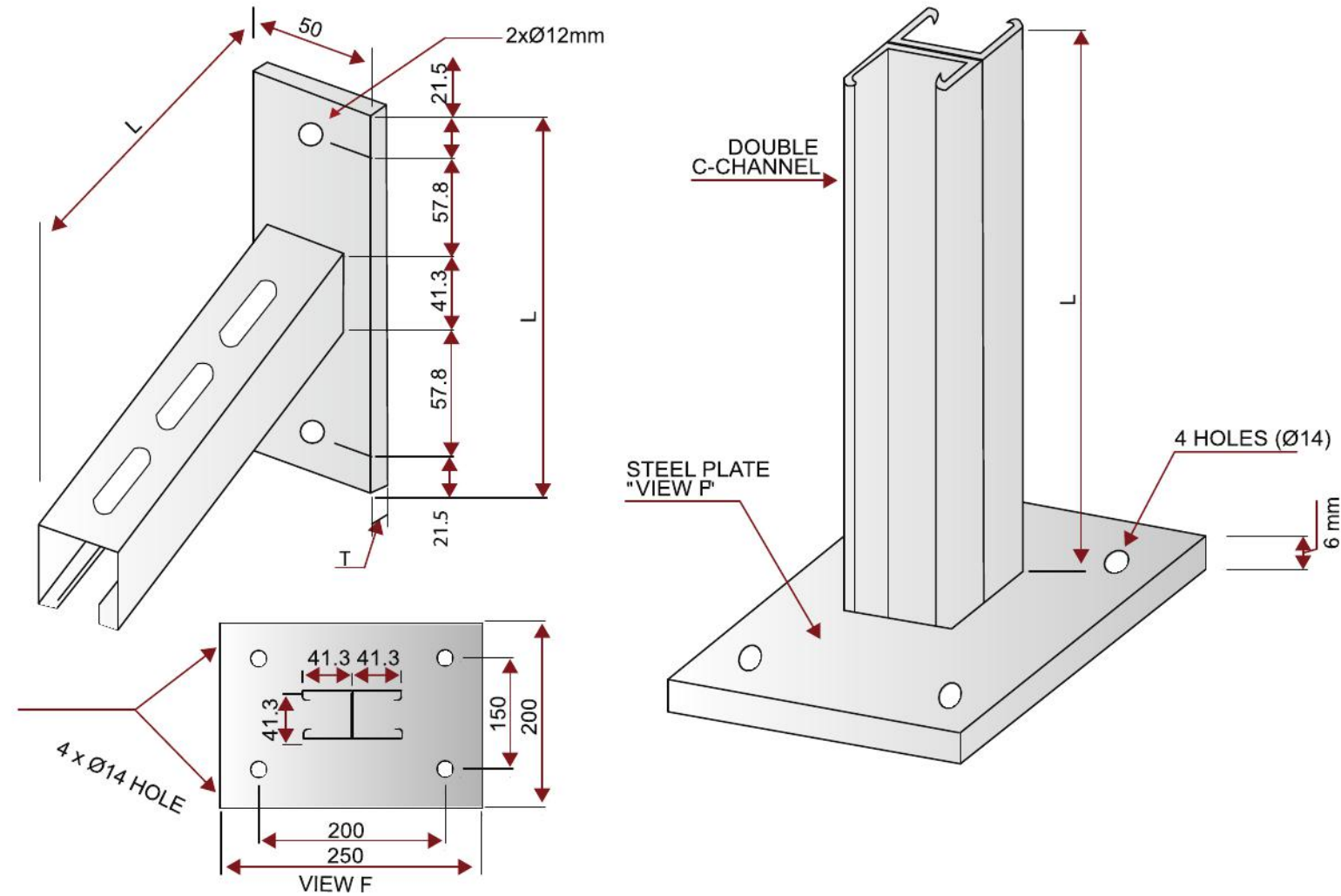
## Surface C-Channel Plain, Perforated



**Note:** Maximum Available Width 1000mm.



## Double & Single Direction C-Channel Bracket



**Note:** Maximum Available Width 1000mm.

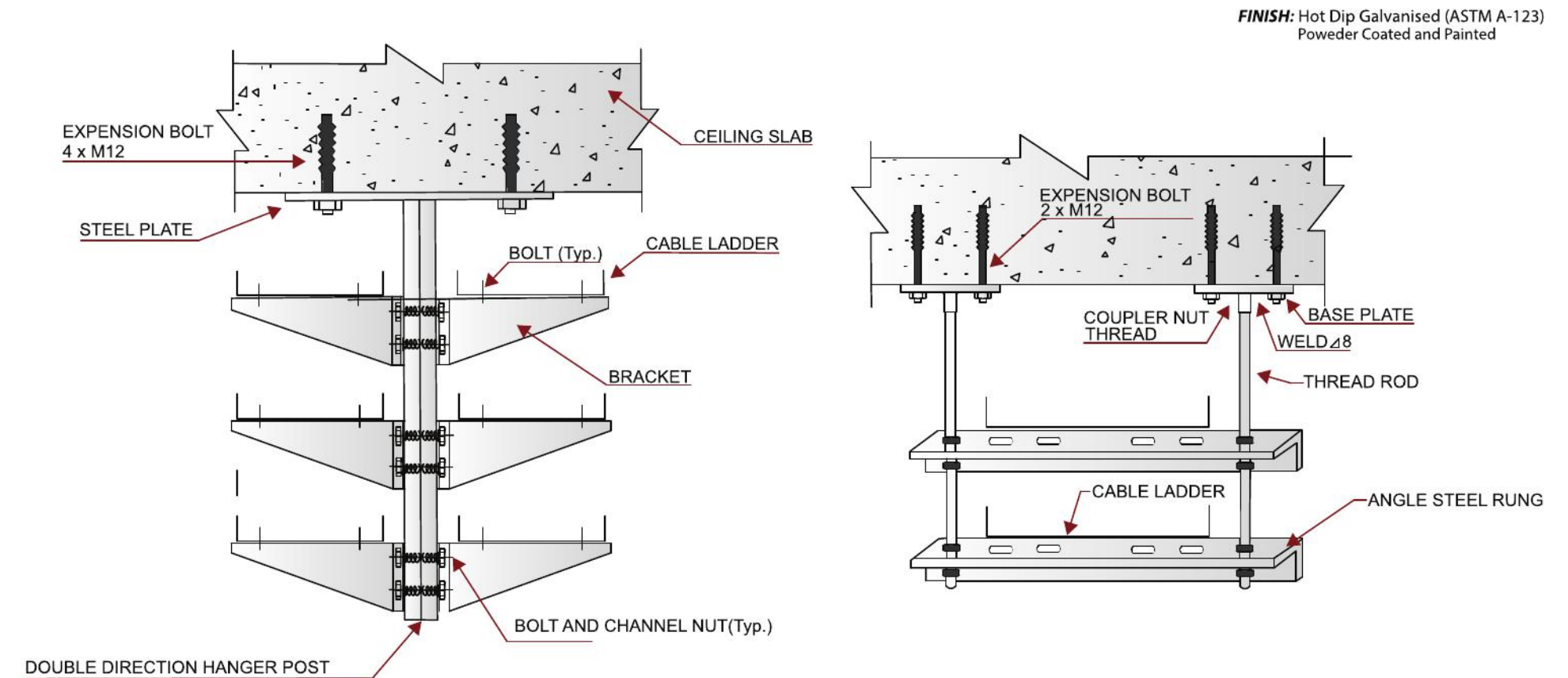
S.NO.	CODE NO.	L (mm)	T (mm)
1	AI-SCB-20	200	10
2	AI-SCB-25	250	10
3	AI-SCB-30	300	10
4	AI-SCB-40	400	10
5	AI-SCB-50	500	10
6	AI-SCB-55	550	10
7	AI-SCB-60	600	10

**FINISH:** Hot Dip Galvanised (ASTM A-123)  
Powder Coated and Painted

S.NO.	CODE NO.	L (mm)	T (mm)
1	AI-DCB-20	250	10
2	AI-DCB-25	250	10
3	AI-DCB-30	300	10
4	AI-DCB-40	400	10
5	AI-DCB-50	500	10
6	AI-DCB-55	550	10
7	AI-DCB-60	600	10

**MATERIAL:** Hot Rolled/Cold Rolled  
Mild Steel/Stainless Steel

## Cable Management System Running on Ceiling (Surface Mounted)

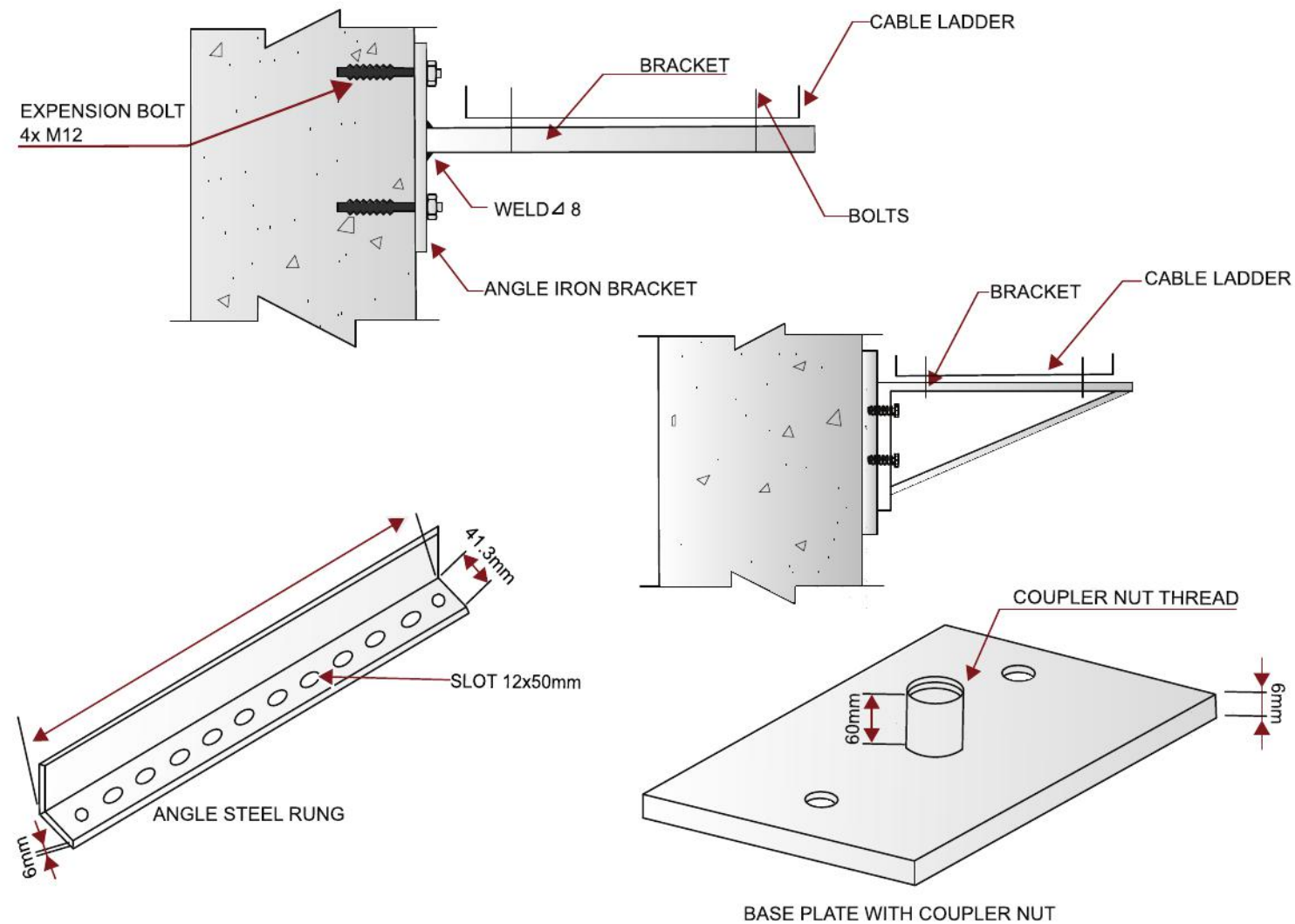


**Note:** Maximum Available Width 1000mm.

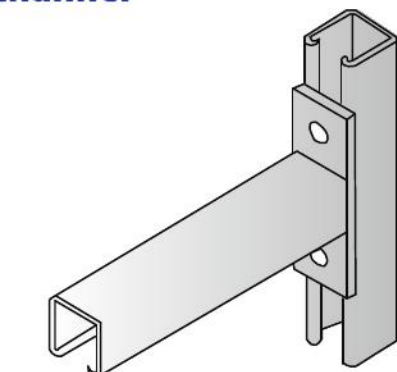
**MATERIAL:** Hot Rolled/Cold Rolled  
Mild Steel/Stainless Steel



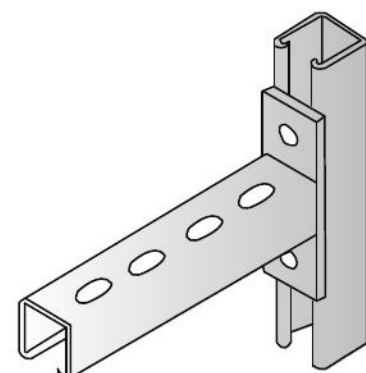
## Cable Management System Wall Support by C-Channel & Bracket - Bracket Assembly C-Channel



**Note:** Maximum Available Width 1000mm.



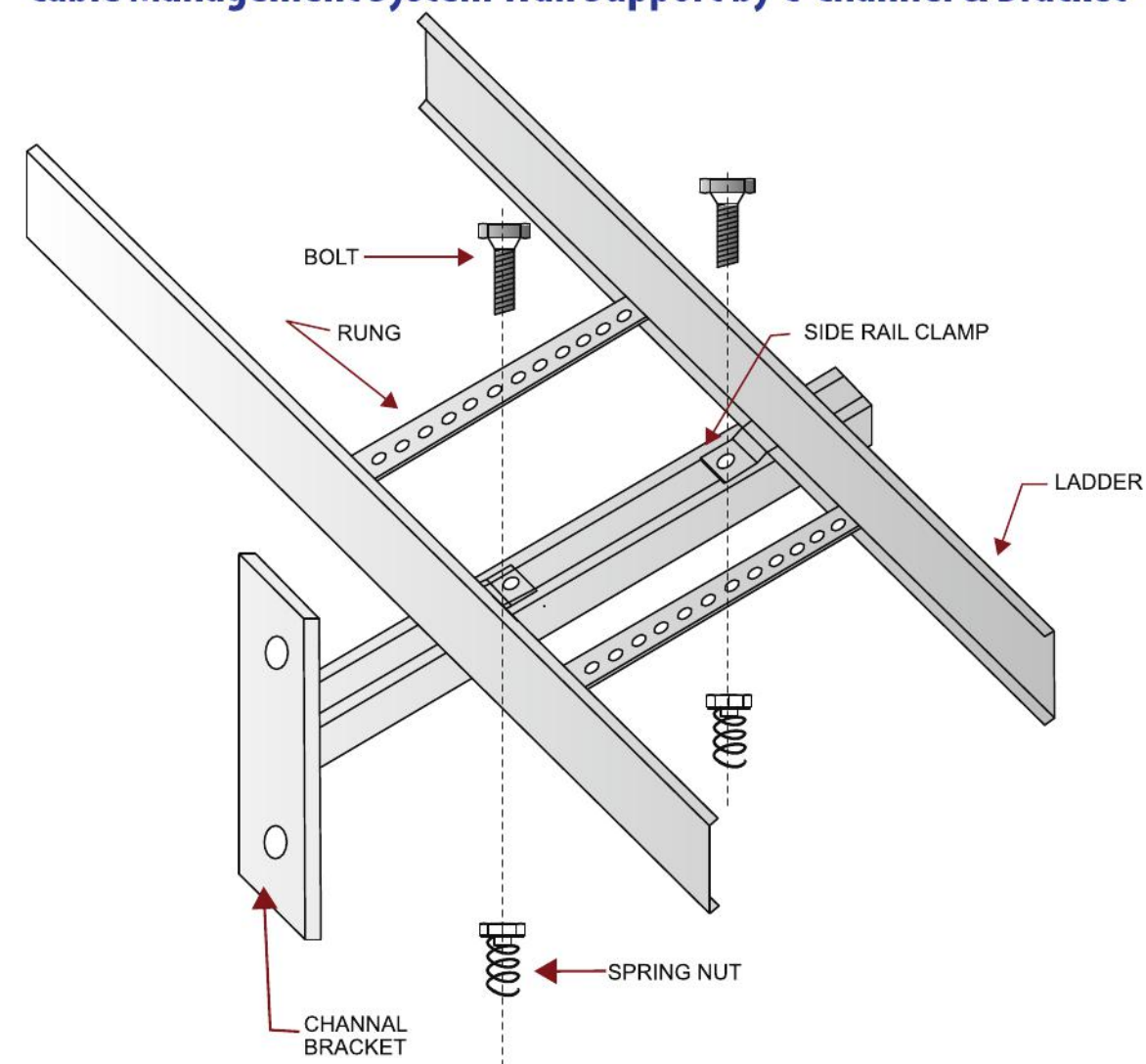
**FINISH:** Hot Dip Galvanised (ASTM A-123)  
Powder Coated and Painted



Base plate Part No.	Coupler Size	Length of coupler (mm)
AI-BP-037	3/8" -11	60
AI-BP-050	1/2" -13	60
AI-BP-062	5/8" -16	60

**MATERIAL:** Hot Rolled/Cold Rolled  
Mild Steel/Stainless Steel

## Cable Management System Wall Support by C-Channel & Bracket - Bracket Assembly with C-Channel Nut & Bolt



**FINISH:** Hot Dip Galvanised (ASTM A-123)  
Powder Coated and Painted

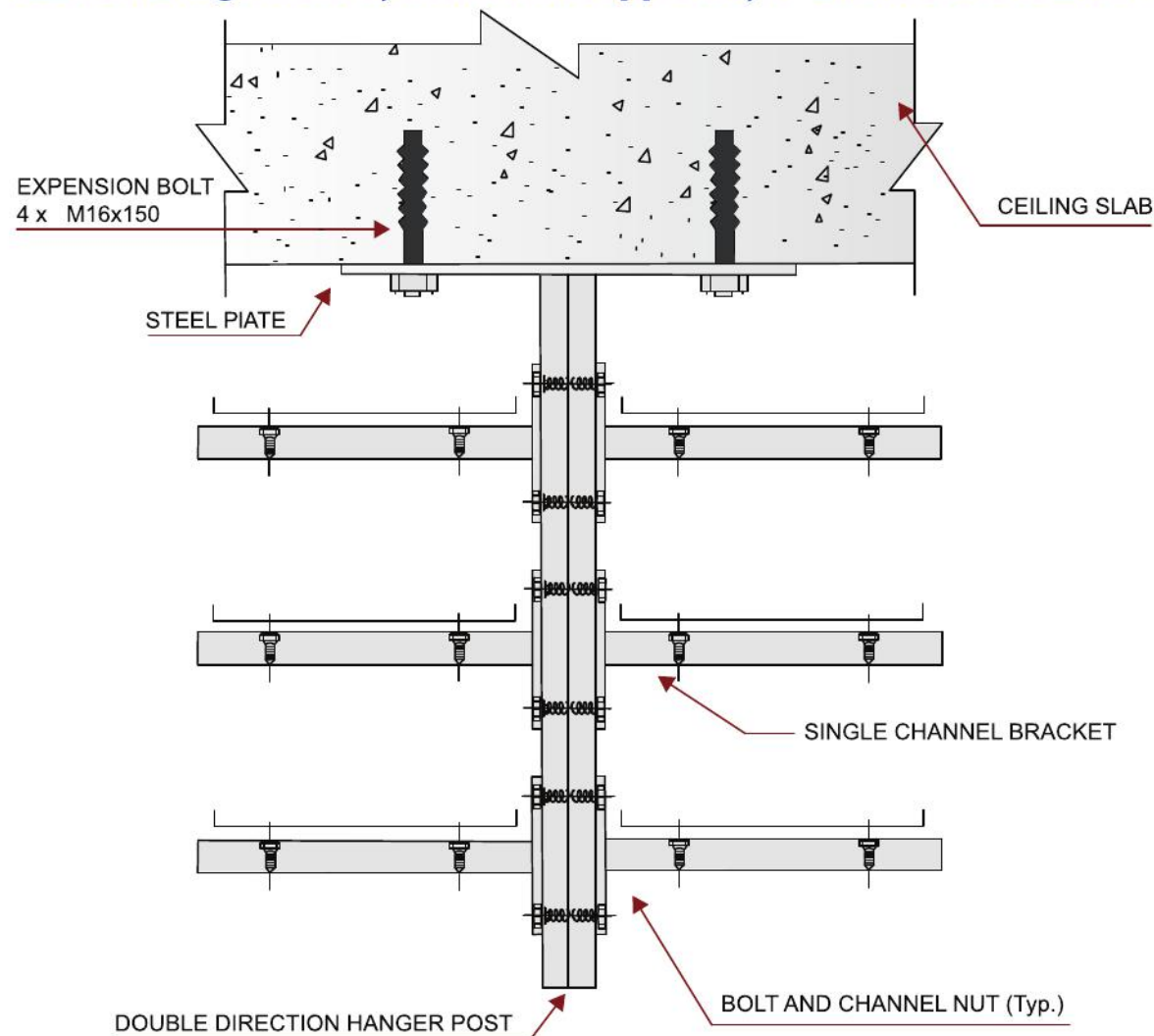
**MATERIAL:** Hot Rolled/Cold Rolled  
Mild Steel/Stainless Steel

**Note:** Maximum Available Width 1000mm.





## Cable Management System Wall Support by C-Channel & Bracket - Bracket assembly with C-Channel Nut & Bolt



**FINISH:** Hot Dip Galvanised (ASTM A-123)  
Powder Coated and Painted

**MATERIAL:** Hot Rolled/Cold Rolled  
Mild Steel/Stainless Steel

**Note:** Maximum Available Width 1000mm.



## Air Rod

Rod length	Rod diameter	Thread diameter	Material	Weight each
500mm	15mm	16mm	Copper	0.73kg
1000mm	15mm	16mm	Copper	1.15kg
1500mm	15mm	16mm	Copper	2.3kg
2000mm	15mm	16mm	Copper	3.00kg
3000mm	15mm	16mm	Copper	4.7kg
500mm	15mm	16mm	Aluminium	0.29kg
1000mm	15mm	16mm	Aluminium	0.53kg
1500mm	15mm	16mm	Aluminium	0.80kg
2000mm	15mm	16mm	Aluminium	1.06kg
3000mm	15mm	16mm	Aluminium	1.60kg

Manufactured from high conductivity hard drawn copper or aluminium, with rolled threads. Supplied complete with locknut.

*Field Trials in the United States, carried out over many years research have confirmed that blunt air rods are struck by lightning in preference to taper pointed air rods.*

"Lightning rod improvement studies" by C B Moore, W Rison, J Mathis, G Aulich. Journal of Applied Meteorology, May 2000.

Note: during high winds and extreme weather conditions air rods over 1000mm long can be subjected to fatigue mechanisms. It is therefore recommended that additional supports are considered before installation.



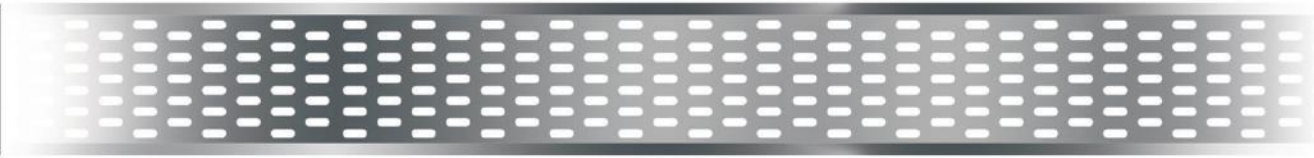
## Air Rod Base

Rod diameter	Thread diameter	Maximum conductor width	Material	Weight each
15mm	16mm	25mm	Copper	0.43kg
15mm	16mm	25mm	Aluminium	0.14kg

Manufactured from high quality copper and aluminium alloys. Simple to install, providing an effective connection between air rod and air termination tape.







## Strike Pad

Conductor	Weight each
Copper	0.41kg
Aluminium	0.13kg
Copper stem for use with PL010	0.07kg

Manufactured from high quality copper and aluminium alloys. Designed to provide an exposed attractive point on conductor systems hidden/embedded in the buildings fabric e.g below the tiles of a pitched roof.

Supplied with setscrew for attachment of lighting conductors.



## Rod to Tape Coupling

Rod diameter	Thread diameter	Rod Material	Weigth each
15mm	16mm	Copper	0.23kg
15mm	16mm	Aluminium	0.08kg

Manufactured from high quality copper and aluminium alloys. Provides an effective connection between air rod and air termination tape. Use in conjunction with rod brackets



## Oblong Test or Junction Clamp

Conductor Size	Material	Weight each
26 x 8mm	Copper	0.29kg
26 x 8mm	Aluminium	0.12kg

Manufactured from high quality copper and aluminium alloys. Simple to install, providing an effective low resistance between overlapping tapes.This clamped connection is easily made/remade to aallow for periodic testing.

\* Not as illustrated



## DC Tape Clip

### Use with Bare Copper

Conductor Size	Weight Each
20 x 3mm	0.06kg
25 x 4mm	0.07kg
30 x 5mm	0.10kg
38 x 5mm	0.12kg
40 x 4mm	0.14kg
50 x 4mm	0.15kg

Made from High Quality Copper Alloys.

### Use with PVC Covered Copper

Conductor Size	Weight Each
25 x 3mm	0.10kg
25 x 6mm	0.13kg
50 x 6mm	0.26kg

Made from High Quality Copper Alloys.

### Use with Lead Covered Copper

Conductor Size	Weight Each
25 x 3mm	0.20kg

Made from High Quality Copper Alloys.

### Use with Bare Aluminium

Conductor Size	Weight Each
20 x 3mm	0.02kg

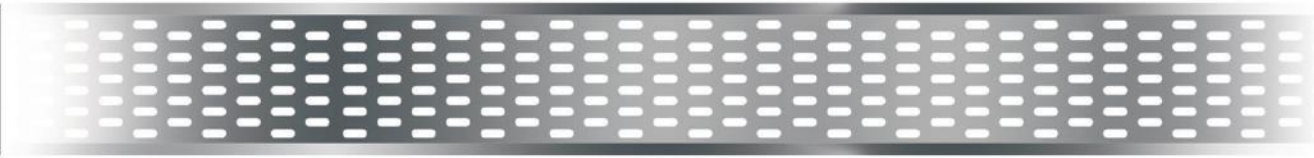
### Use with PVC Covered Aluminium

Conductor Size	Weight Each
25 x 3mm	0.04kg
50 x 6mm	0.06kg

Made from High Quality Aluminium Alloys.







## Tape Clip

### Use with Bare Copper

Conductor Size	Weight Each
20 x 3mm	0.02kg
25 x 6mm	0.02kg

### Use with PVC Covered Tape

Conductor Size	Weight Each
25 x 3mm	0.02kg

### Use with Bare Aluminium

Conductor Size	Weight Each
20 x 3mm	0.01g
25 x 3mm	0.01kg

Manufactured from pure copper or aluminium, these simple pressed clips are available in a range of size to suit bare and PVC covered copper and aluminium tapes.



## Adhesive DC Tape Clip

### Use with Bare Tape

Conductor Size	Colour	Weight Each
25 x 3mm	Brown	0.03kg
25 x 3mm	Grey	0.03kg

### Use with PVC Covered Tape

Conductor Size	Colour	Weight Each
25 x 3mm	Brown	0.03kg
25 x 3mm	Black	0.03kg
25 x 3mm	Grey	0.03kg
25 x 3mm	Stone	0.03kg
25 x 3mm	White	0.03kg



Designed to secure conductors to surfaces that cannot be penetrated by a screw. Ideal for aluminium, spangled galvanized steel, color coated steel ,glass, perspex, enamel and stainless steel etc. Manufactured from high grade plastic, UV stabilised against degradation by sunlight and non-breittle to prevent cold weather damage.

Use on surfaces other than PVC roofing.



## Flexible Copper Braid Bond

Overall Braid Dimensions	Hole Size	Hole Centres	Weight each
25 x 3.5mm	11mm	200mm	0.09kg
25 x 3.5mm	11mm	400mm	0.15kg



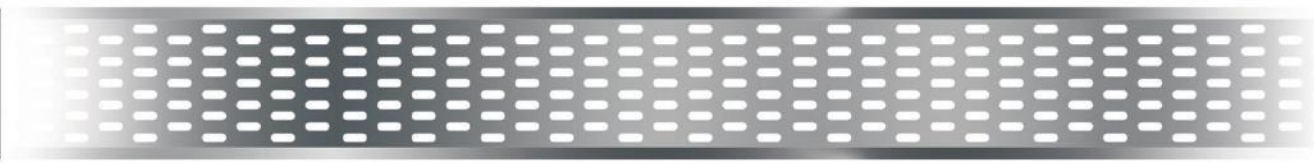
## Earth Point with Pre-welded Tail

Description	Weigth each
As PC100-FU with Prewelded 500mm' long tail of 70mm PVC Insulated Earth Cable	0.56kg
As PC101-FU with Prewelded 500mm long tail of 70mm PVC Insulated Earth Cable	0.56kg
As PC102-FU with Prewelded 500mm long tail of 70mm PVC Insulated Earth Cable	0.56kg
As PC103-FU with Prewelded 500mm long tail of 70mm PVC Insulated Earth Cable	0.56kg
As PC110-FU with Prewelded 500mm long tail of 70mm PVC Insulated Earth Cable	1.14kg
As PC115-FU with Prewelded 500mm long tail of 70mm PVC Insulated Earth Cable	0.84kg
As PC120-FU with Prewelded 500mm long tail of 70mm PVC Insulated Earth Cable	0.84kg
As PC125-FU with Prewelded 500mm long tail of 70mm PVC Insulated Earth Cable	0.84kg

For Eath Points PC100-FU etc.

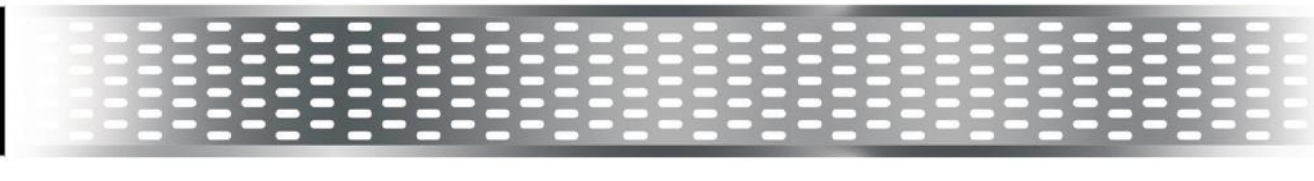
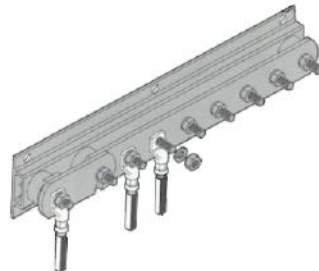






Earth Bar with Single Disconnecting Link

Description	Length	Width	Height	Weight each
6 way	475mm	90mm	475mm	2.30kg
8 way	575mm	90mm	96mm	2.70kg
10 way	725mm	90mm	96mm	3.30kg
12 way	825mm	90mm	96mm	3.70kg
14 way	925mm	90mm	96mm	4.10kg
16 way	1025mm	90mm	96mm	4.50kg
18 way	1125mm	90mm	96mm	4.90kg
20 way	1275mm	90mm	96mm	5.50kg
22 way	1375mm	90mm	96mm	5.90kg
24 way	1475mm	90mm	96mm	6.30kg
26 way	1575mm	90mm	96mm	6.70kg
28 way	1725mm	90mm	96mm	7.40kg
30 way	1825mm	90mm	96mm	7.80kg



Air Rod Base

Rod diameter	Thread diameter	Maximum conductor width	Material	Weight each
15mm	16mm	25mm	Copper	0.43kg
15mm	16mm	25mm	Aluminium	0.14kg

Manufactured from high quality copper and aluminium alloys. Simple to install, providing an effective connection between air rod and air termination tape.



Square Clamp

Conductor Diameter	Conductor Material	Weight each
8mm	Copper	0.17kg
8mm	Aluminium	0.07kg

Designed to provide low resistance joints in solid circular conductor networks. Manufactured from high quality copper and aluminium alloys for excellent corrosion resistance.



Oblong Test or Junction Clamp

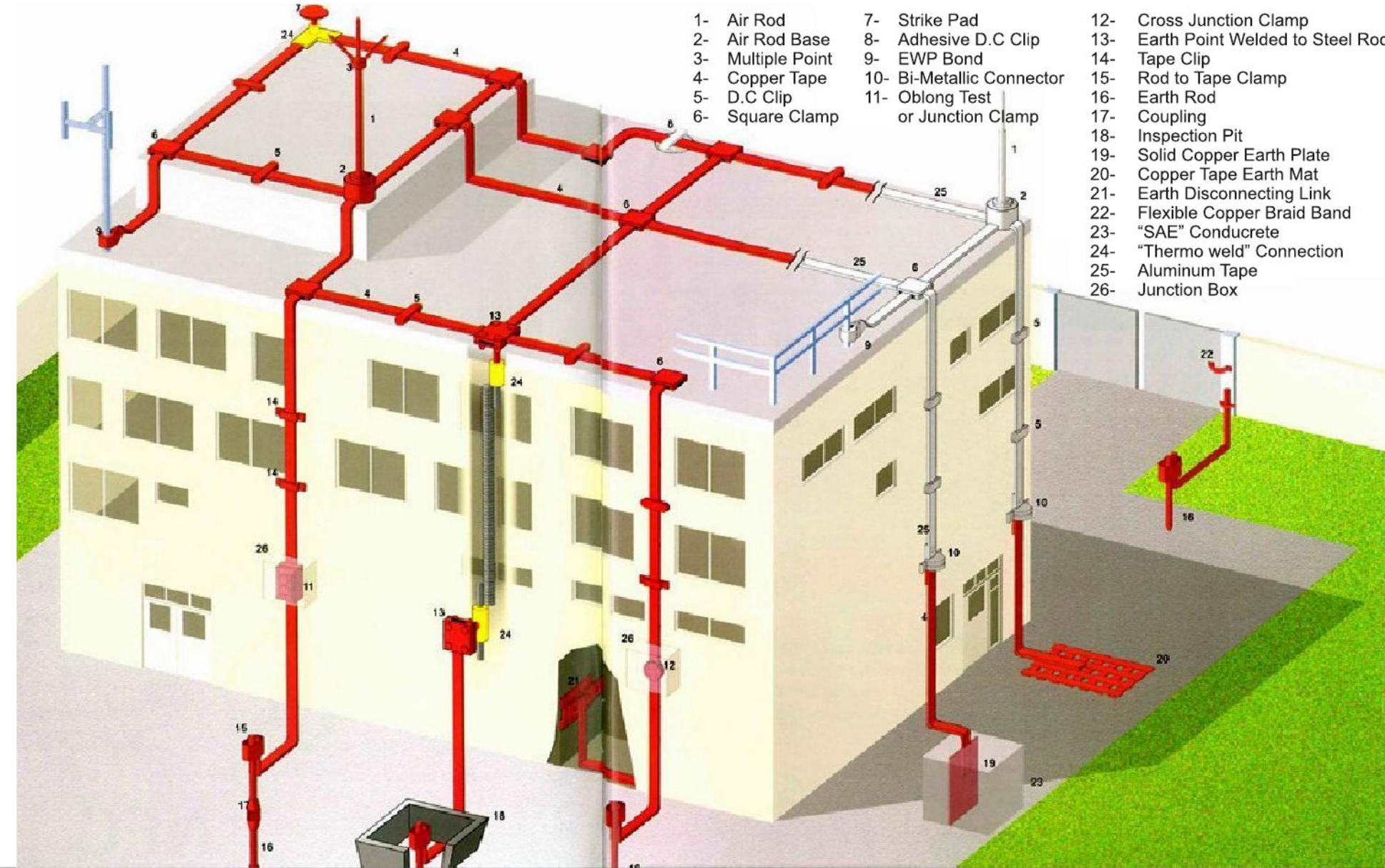
Conductor Size	Material	Weight each
26 x 8mm	Copper	0.29kg
26 x 8mm	Aluminium	0.12kg

Manufactured from high quality copper and aluminium alloys. Simple to install, providing an effective low resistance between overlapping tapes. This clamped connection is easily made/remade to allow for periodic testing.



\* Not as illustrated





- |                   |                                   |                                     |
|-------------------|-----------------------------------|-------------------------------------|
| 1- Air Rod        | 7- Strike Pad                     | 12- Cross Junction Clamp            |
| 2- Air Rod Base   | 8- Adhesive D.C Clip              | 13- Earth Point Welded to Steel Rod |
| 3- Multiple Point | 9- EWP Bond                       | 14- Tape Clip                       |
| 4- Copper Tape    | 10- Bi-Metallic Connector         | 15- Rod to Tape Clamp               |
| 5- D.C Clip       | 11- Oblong Test or Junction Clamp | 16- Earth Rod                       |
| 6- Square Clamp   |                                   | 17- Coupling                        |
|                   |                                   | 18- Inspection Pit                  |
|                   |                                   | 19- Solid Copper Earth Plate        |
|                   |                                   | 20- Copper Tape Earth Mat           |
|                   |                                   | 21- Earth Disconnecting Link        |
|                   |                                   | 22- Flexible Copper Braid Band      |
|                   |                                   | 23- "SAE" Conducrete                |
|                   |                                   | 24- "Thermo weld" Connection        |
|                   |                                   | 25- Aluminum Tape                   |
|                   |                                   | 26- Junction Box                    |

